

HSBC SELECT MODERATE French mutual fund (FCP)

**Annual report for the year ended 31
December 2018**

*UCITS DO NOT HAVE A GUARANTEED RETURN AND PREVIOUS PERFORMANCE DOES NOT
GUARANTEE FUTURE RETURNS.*

FCP HSBC SELECT MODERATE

Contents

	Pages
Information concerning investments and management	3
Activity report	6
Regulatory information	17
Statutory auditor's report on the annual financial statements	19
Annual financial statements	23
Balance sheet: Assets	24
Balance sheet: Liabilities & Equity	25
Off-balance sheet commitments	26
Income statements	27
Notes to the annual financial statements	28
Accounting rules and methods	29
Change in net assets	33
Additional information	34
Results for the last five fiscal years	43
Inventory	44
Information concerning investments and management (continued)	47

FCP HSBC SELECT MODERATE

Information concerning investments and management

Management company

HSBC Global Asset Management (France)

Depositary and Custodian

CACEIS Bank

Appointed accounting manager

CACEIS Fund Administration

Statutory Auditor

Ernst & Young et Autres

Key Investor Information

This document provides key information about this UCITS to investors. It is not a marketing document. The information that it contains is provided to you in accordance with a legal obligation in order to allow you to understand what an investment in this fund involves and what risks are associated with it. It is recommended that you read it in order to make an informed investment decision.

HSBC SELECT MODERATE

A unit: ISIN code: FR0007036942

Management Company: HSBC Global Asset Management (France)

Objectives and investment policy

Description of the objectives and investment policy:

- ▶ The objective of the mutual fund is to offer flexible management on equity and interest rate markets over a minimum investment period of 3 years. Despite operating within larger allocation limits, the mutual fund's profile may be compared with an allocation made up of 20% equities and 80% public and private bonds on average, invested in developed markets with a euro bias as well as in emerging markets for diversifications.
- ▶ The investment strategy is discretionary and is based on a portfolio management process organised around three pillars:
 - a medium/long-term strategic asset allocation depending on the manager's level of conviction (asset classes, geographical areas, sectors),
 - a tactical allocation resulting from the short-term convictions of the manager, who will strive to take advantage of any market opportunities,
 - a selection of undertakings for collective investment (UCI) and managers likely, according to us, to generate performance over time.

Key features of the UCITS:

- ▶ Up to 100% of the mutual fund's assets are invested in units or shares of French or European UCI, managed primarily by the HSBC Group, with the following allocation limits:
 - *Equity UCI*: up to 25% of the mutual fund's assets, without any predefined minimum, invested in all sectors and all capitalisations.
 - *Fixed-income product UCI*: up to 90% of the Fund's assets, without any predefined minimum, divided between government securities and corporate securities, European or international, investment grade or high yield (riskier securities due to their low rating), or deemed

equivalent by the Management Company (up to 30% of the Fund's assets), emerging debt (in the same proportions), as well as convertible bonds.

The Management Company does not exclusively or mechanically use ratings provided by credit rating agencies and favours its own credit risk analysis to assess the credit quality of the assets and in the selection of securities to purchase or sell.

- ▶ The mutual fund may also invest up to 20% of its assets in diversified and/or flexible UCI as part of "absolute return" strategies.
- ▶ The mutual fund may also use French or European index-based UCI or trackers (French or European UCITS funds or AIFs).
- ▶ Up to 75% of the mutual fund's assets may bear a currency risk.
- ▶ The mutual fund may borrow cash up to 10% for cash flow imbalance reasons.
- ▶ The mutual fund may invest in financial contracts, on regulated, organised, or OTC markets (swaps, futures, options or exchange forwards) for the purposes of hedging of and/or exposure to equity risk, interest rate risk, and/or currency risk.
- ▶ The distributable amounts of the A unit are fully accumulated.
- ▶ Recommended minimum investment period: more than 3 years.

Subscription and redemption requests are accepted at any time until 12:00 p.m. and executed daily on the basis of the next net asset value (i.e. at an unknown price). Settlements relating to subscription requests are carried out on the second business day following the date of establishment of the net asset value. Settlements relating to redemption requests are carried out on the third business day following the date of establishment of the net asset value.

Risk and return profile



1	2	3	4	5	6	7
---	---	---	---	---	---	---

- ▶ Historical data, such as data used to calculate the composite indicator, may not be a reliable indication of the future risk profile of the UCITS.
- ▶ The category of risk associated with this UCITS is not guaranteed and may change over time.
- ▶ The lowest category does not mean that the product is "risk-free".
- ▶ The mutual fund is classified in category 3. This classification corresponds to a variable combination of exposure to equity and bond markets.

The following risks, not taken into account in the indicator, may also have an impact on the net asset value of the UCITS:

- ▶ Credit risk: risk that the financial situation of the issuer of a bond or a debt instrument will deteriorate, the extreme risk being the risk of default of the issuer.
- ▶ Risk associated with financial contracts: the use of financial futures may lead to replicating, increasing, or reducing an exposure to markets, indices, assets, etc. The Fund's net asset value may thus, in some cases, change in a way different from that of the underlying markets to which the Fund is exposed.

Fees

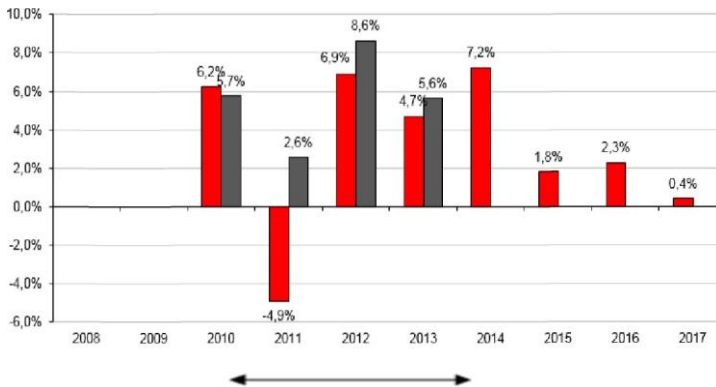
"Fees and commissions charged are used to cover the operating costs of the UCITS, including the costs of marketing and distributing units. These fees reduce the potential growth of investments."

One-off fees deducted before or after investment	
Entry fees	2.00%
Exit fees	None
The indicated percentage is the maximum that may be deducted from your capital before it is invested. Investors may obtain the actual amount of entry and exit fees from their adviser or distributor.	
Fees deducted by the UCITS over a year	
Ongoing fees	1.05%
Fees deducted by the UCITS under certain circumstances	
Performance commission	None

- ▶ Ongoing fees are based on the preceding accounting period, which closed in December 2017, and may vary from one period to the next.
- ▶ For more information on fees, please refer to the "fees" section of the prospectus of this UCITS available at: <http://www.assetmanagement.hsbc.com/fr>
- ▶ Ongoing fees do not include performance commissions and intermediation fees except in case of entry and/or exit fees paid by the UCITS when it buys or sells units of another collective management vehicle.

Past performance

- HSBC Select Moderate - A unit
- 50% ML EUGOV BD LOC (RI) + 25% EONIA (RI) + 20% MSCI WORLD EUR (RI) + 5% MSCI FRANCE (RI)



- ▶ Past performance is not a reliable indicator of future performance. Past performance figures have been calculated in euros.
- ▶ The calculation of past performance takes account of all fees except any entry and exit fees.
- ▶ Performance figures are calculated with net coupons reinvested for the mutual fund and gross dividends reinvested for the index.
- ▶ The UCITS was created on 07 January 2009.
- ▶ The A unit was created on 07 January 2009.
- ▶ Starting on 25 September 2014, the benchmark was eliminated.

The arrow above corresponds to the period during which the benchmark was different. Prior performance was achieved under circumstances that are no longer present.

Helpful information

- ▶ Custodian: CACEIS Bank
- ▶ The UCITS's information documents (prospectus/annual report/half-yearly document) are available in French free of charge upon request sent to HSBC Global Asset Management's client services by email: hsbc.client.services-am@hsbc.fr
- ▶ The net asset value can be obtained from the Management Company.
- ▶ Taxation: Accumulation unit.
- ▶ The tax laws in the UCITS's country of residence could have an impact on investors.
- ▶ The information documents for other unit classes (prospectus / annual report / half-yearly document) are available in French free of charge upon request sent to the Management Company's client services by email: hsbc.client.services-am@hsbc.fr :
 - HSBC Select Moderate, H unit (ISIN code: FR0011883305)
 - HSBC Select Moderate, R unit (ISIN code: FR0013269883)
 - HSBC Select Moderate, B unit (ISIN code: FR0013314002)
 - HSBC Select Moderate, IT unit (ISIN code: FR0013234929)
- ▶ HSBC Global Asset Management (France) can only be held responsible on the basis of statements contained in this document that are misleading, inaccurate, or inconsistent with the corresponding sections of the UCITS prospectus.
- ▶ This fund is not open to residents of the United States of America/"US Persons" (the definition can be found in the prospectus).
- ▶ Details of the management company's updated remuneration policy are available on its website at www.assetmanagement.hsbc.com/fr or, at no cost, by requesting a copy in writing from the management company. These details contain the method used to calculate the remuneration and benefits granted to certain employees, the bodies responsible for allocating remuneration, and the composition of the remuneration committee.

This UCITS is approved in France and regulated by the French financial markets authority (AMF).

HSBC Global Asset Management (France) is approved in France and regulated by the AMF.

The key investor information provided here is accurate and up to date as of 17 April 2018.

Activity report

Macroeconomic overview

The fourth quarter of 2018 was marked by multiple sources of concern due to trade and budgetary tensions but also the continuation of monetary normalisation. After the growth cycles in China, Europe, and Japan slowed down, doubts focused on the dynamics of the US economy. On the US fiscal front, the mid-term elections gave the Democrats a majority in the House of Representatives, reducing the likelihood of a major fiscal agreement to support activity (particularly through infrastructure). The impetus of tax reform that allowed GDP to accelerate to 3% in 2018 faded in 2019. On the monetary front, the US Federal Reserve (Fed) noted a less favourable environment, while raising its key interest rates in December as expected (+25bps to 2.25%-2.50%). Its median forecasts predict that GDP will slow down to 2.3% in 2019, then 2% in 2020 and 1.8% in 2021, against the backdrop of tighter financial conditions (2 key interest rate hikes expected in 2019, then 1 increase in 2020). Inflationary pressures (year-on-year inflation of 2.2% in November) are likely to intensify in a context of full employment (record-low unemployment rate of 3.7%) and wage increases (+3.2% year on year in November, above the average of 2.8% since 2000). On the trade front, the prospect of a bilateral agreement with China remained very uncertain, even though a negotiation stage was open until 1 March 2019. Political uncertainties in Europe weighed on confidence and activity indices: tariff risks in the European automotive sector still have not been ruled out, and Brexit negotiations have become more complicated, reducing the visibility of the future of relations between the United Kingdom and the European Union. In addition, unexpected events proved to be detrimental this quarter: in Germany, the introduction of emissions tests in the automotive sector created bottlenecks upstream of production and sales, while the yellow vests demonstrations in France against a new carbon tax severely disrupted activity. Lastly, the Italian economy worsened in the wake of tighter financial conditions caused by tense budget negotiations with Brussels. At the last minute, the government adjusted its deficit path (2.04% of GDP versus 2.4% initially), thus avoiding being placed in an excessive deficit procedure. In total, eurozone GDP growth estimates declined significantly to 1.9% in 2018 and 1.6% in 2019 (after 2.5% in 2017). With regard to emerging economies, financial conditions remained tight after a summer of capital outflows due to political uncertainties (Turkey, Mexico, Brazil, South Africa). The plunge in oil prices in the fourth quarter provided some relief for importing countries (Turkey, India, and China) while adversely affecting producers (Russia and Mexico). Lastly, in China, tighter regulation to reduce private debt weighed on shadow credit activity, resulting in sharp declines in equity markets and negative wealth effects that dampened domestic demand. However, the series of emergency measures (tax incentives, targeted credit easing) could successfully control the slowdown in GDP growth, still estimated at 6.3% in 2019, after 6.6% in 2018 and 6.9% in 2017.

There were no major economic or monetary shocks in the third quarter of 2018, at least in developed countries. Even so, political and trade issues were probably the main source of uncertainty for economic players over the summer. For example, most global industrial activity indicators tended to fall back

FCP HSBC SELECT MODERATE

in this climate of tensions created by the US administration, particularly towards China. Emerging countries saw a sharp decline in their activity indices with Europe in the wake. Countries highly exposed to the dynamics of world trade, such as Sweden and Korea, were the most affected by a significant slowdown in their exports. The rise of populism also reared its ugly head with economic players, with an Italian government that visibly decided to test the tolerance of bond markets and the European Commission by proposing an expansionary 2019 budget, reducing the retirement age and increasing social benefits. Not surprisingly, Italy seemed to suffer from this climate, with the most deteriorated activity indicators in the eurozone and financial conditions that could tighten for businesses. At the same time, many emerging economies are suffering from tighter global liquidity and fears of populist tendencies. Such is the case in Turkey and South Africa, where their currencies fell against the dollar or the euro, indicating a loss of investor confidence in the institutions of these countries, which is expected to lead to inflationary recessions. Paradoxically, the health of the US economy shows no signs of slowing. On the employment front, net job creation is still as dynamic, the unemployment rate remains below 4%, and wages are rising, but without presenting any alarming underlying pressures for now. Business profitability remains strong, and productive investment continues to be dynamic. Public investment also appears to be picking up again and supporting the construction sector. Lastly, the national savings rate, revised by the national accountants, recovered significantly over the last two years, notably through the sharp improvement in the profitability and financial situation of small businesses and the self-employed. At this stage, the US economy remains the strongest driver of global growth.

Spring 2018 began on a slightly less solid economic tone, especially in the eurozone. Activity indicators worsened significantly, particularly in German industry, due to less favourable expectations on the part of industrialists, probably in connection with protectionist rhetoric by the US administration. At this point, most analysts tended to favour an air gap in the hope that these expectations would not materialise in the order books still considered to be very strong. US economic figures showed greater resilience. The unemployment rate set new record lows below 3.8% during the quarter. Domestic demand remained on a growth trend, probably close to 3% at the end of the second quarter, driven by continued dynamic domestic consumption and investment. Business confidence indicators, especially among leaders of and medium-sized enterprises (SMEs), remained consistently high at the end of the quarter. While inflation and wages still seem contained, there is some evidence that wage pressures continued to rise in the spring, particularly in certain segments of the labour market (skilled technicians, construction or industrial sectors, engineers working in hi-tech, etc.). Against this backdrop, the US Federal Reserve confirmed its desire to continue its plan to raise interest rates. As a result, emerging countries, dependent on financing in dollars of their external debt, appear to be beginning to suffer from this monetary tightening, with some countries, such as Turkey or Argentina, with the most vulnerable fundamentals likely to be very close to relying on international monetary institutions to meet their current financing needs. Even China received support from its central bank, stepping up interventions in June to reduce interbank tensions and likely contributing to aggressive currency depreciation. As such, while the United States remained the driving force for the world, the Asia and Europe regions seemed to begin to experience a slight downturn in activity at the beginning of the summer, probably confirming that the cyclical peak of global growth was reached at the beginning of 2018.

FCP HSBC SELECT MODERATE

The beginning of 2018 did not mark any major macroeconomic shifts. Most cyclical indicators continued to suggest synchronised global growth, with the United States and Europe, and to a lesser extent the emerging world, as the predominant drivers of global activity. In the US, job creation was strong and positive and accompanied the drop in the unemployment rate to 4.0%. The level of private sector employment exceeded its peak in 2007. The US economy is in full employment for skilled workers, and tensions are emerging in structurally scarce sectors (technology, professional services, construction, engineering, etc.). In this context, the announcement of a corporate tax reduction plan was cautiously welcomed by experts, fearing that such a tax stimulus would be more inflationary than generating real growth. In the first quarter, wage increases remained moderate across the Atlantic, and underlying inflation remained under control. Against this backdrop, the Federal Reserve, now headed by a new chairman, Jerome Powell, seems to be holding steady at three to four short rate hikes in 2018. In the European manufacturing sector, especially in Germany, the strain is more intense. Capacity utilisation rates in industry are well above their long-term average now, and strikes demanding wage increases of more than 6% are beginning to appear in German industry or in European services. In the first quarter of 2018, while the real effective exchange rate of the euro appreciated significantly, effectively the equivalent of monetary tightening (equivalent to a short rate hike of 100 basis points), the ECB did not seem prepared to take as proactive a step as the US Federal Reserve (Fed) towards normalising its monetary policy.

Financial overview

2018 was marked by a plunge in financial assets, with the exception of sovereign debt markets in Japan and in the eurozone (Germany, Spain, Portugal, France). This turbulence served as a reminder of the narrow path to monetary normalisation in an overall difficult environment in terms of fiscal policy. Continued normalisation of the Fed's balance sheet (with four key interest rate hikes of 25bps in 2018 and reductions in securities reinvestment) led to tighter liquidity conditions with implied equity volatility (VIX) rising to 2011 levels. The rise in interest rates led by the United States hampered the search for yield that had characterised financial markets since 2015. Ten-year US government bond yields surged to 3.23% in November (the highest since 2011), driven by real yields and a rebound in term premiums, resulting in a reduced appetite for risky assets. During December, a temporary reversal of the US yield curve triggered strong fluctuations in equity markets, particularly in the United States, followed by a downward reversal of the yield on 10-year US government bonds (to 2.68% at the end of December, i.e. +28bps over one year). At the end of December, low-cost purchases enabled the US stock exchange to lose less (MSCI US -4.5% year on year) compared with declines in equity indices (MSCI TR local currencies) in Japan (-15% year on year), the eurozone (-12% year on year), and the United Kingdom (-9% year on year). On the emerging markets side (MSCI TR local currency indices), Asian stock exchanges (Asia Ex-Japan) underperformed (-15% year on year) those of other regions, mainly due to Chinese equities (-19% year on year). In the credit markets in the US and Europe, corporate bond spreads increased, both in the investment grade (IG)¹ and in the low credit quality segments (high yield - HY), returning to their levels 2016 levels.

¹ Investment Grade refers to private debt bonds with good credit quality and low default risk. This generally corresponds to bonds with a rating of BBB or higher.

FCP HSBC SELECT MODERATE

Political uncertainties in the European HY segment were particularly negative for financial companies. “Commodity” currencies (Russian rouble, Colombian peso) were negatively affected with drops of -17% and -8% respectively (year on year) in the wake of plunging oil prices (WTI -25% year on year) and copper (-18% year on year). The currencies of importing countries (Chinese renminbi, Indian rupee) limited their declines (-5% and -8% year on year, respectively). Lastly, despite a partial recovery in the fourth quarter, the Turkish lira ended down significantly (-28% year on year) due to political tensions. Ultimately, a few safe havens emerged as slightly lucrative over the year (yen +3% year on year and US dollar +4% year on year). Eurozone government bonds (with the exception of Italy) benefited from doubts about the possibility of a true tightening cycle, despite the cessation of the stock purchase programme at the end of December.

By summer 2018, the markets as a whole did not experience any major episodes of risk aversion. Nevertheless, emerging currencies suffered in a very unique way. Most emerging currencies (Brazil, South Africa, China, Russia, and India) experienced sharp declines against the dollar, with Turkey seeing the most dramatic drop (-27%). The Chinese renminbi depreciated significantly (-5.5%) against USD over the quarter, seemingly offsetting the introduction of unilateral tariffs by the US administration. Most industrial, agricultural, or precious metals commodities accompanied this downward trend, while oil prices paradoxically soared over this period (+8.4% for Brent barrel) amid constraints on global production (bottlenecks in the United States) and geopolitical tensions (Iran-Saudi Arabia). Against this backdrop, equity markets were relatively resilient, with the Japanese market performing very strongly in local currency (+10%), followed by emerging equities and US equities. The Italian and English markets remained completely excluded from this recovery dynamic, with declines of -0.5% and -4%, probably explained by domestic causes (fiscal uncertainties in Italy and the threat of a “hard Brexit” in the United Kingdom). In the bond universe, creeping global inflation and fears of tighter monetary policies in Europe fuelled an overall rise in real interest rates, weighing on long-duration bond assets. Lastly, Italian bondholders were severely penalised by the instability created by the new coalition government. At the end of the quarter, the yield spread between Italian 10-year bonds and German bonds stood at 290 basis points (bps), compared with 115bps before the election. Against this backdrop, the corporate credit market performed rather well, notably through the high-yield bond segment benefiting from a relative compression of spreads², with the US market outperforming the Eurozone market very significantly.

Spring 2018 began with a bring period on the markets. After the major risk aversion shock in February, investor confidence recovered in April, particularly in equity markets. Easing of tensions on the geopolitical front with the prospect of a meeting between North Korea and the United States probably contributed to this renewed optimism. Unfortunately, this episode was short-lived. It is difficult to isolate the factors that contributed the most to the deterioration of the climate of confidence from mid-May onwards, particularly in European and emerging equity markets. They may include concerns related to the appointment of an Italian government by an incongruous coalition with a rather contradictory agenda hostile to the European Union in certain aspects, new attacks by the US administration seeking to further increase tariffs on exports unilaterally, mainly

² Credit spread refers to the difference between the issuance rate of a private debt bond and the issuance rate of a government bond with the same duration properties.

FCP HSBC SELECT MODERATE

German and Chinese, or the political tensions within the German majority over the management of migrants. In this environment of renewed major political and geopolitical uncertainties, the credit and equity markets erased the small gains that had been made since the beginning of the year and the end of the second quarter. The divergences in government debt markets did not fade, with US 10-year yields still above 2.8% and German government bond yields dropping to below 0.5% in June amid concerns about eurozone governance. Logically, EUR/USD started to weaken at the end of the winter, falling from 1.26 to 1.16 USD. Generally speaking, the dollar further appreciated against most currencies, in some way allowing the United States to export its domestic inflation. The depreciation of the Chinese currency against the dollar by almost 6.5% since the beginning of April was the most spectacular illustration of this.

In the early days of 2018, risky asset markets continued their euphoric momentum. Nevertheless, the end of January marked a crucial turning point. Implicit volatility surged in the first days of February, accompanied by a sharp correction, causing very violent adjustments, especially in option markets. For example, the VIX index rose from 11.40 on 26 January to 50 during the session on 6 February. Many short positions in volatility products (betting on a continual maintenance or decline in implied volatility) were faced with a phase of abrupt liquidation, thereby destabilising equity markets in particular. Fear of a more aggressive monetary tightening, reflecting an acceleration of bond yields amid inflationary fears, was probably the catalyst for this episode of stress. Apart from this correction with highly endogenous mechanisms, the US administration's bid for new neo-protectionist measures, initially against Europeans and then China, was also likely to fuel concerns in the first quarter. This explains, in particular, the very disappointing overall performance of equity markets over this period in local currency: S&P 500: -3.5%, Euro-Stoxx 50: -4.6%, Nikkei: -6.5%. Notably, there was no "safe haven" behaviour on the part of sovereign bond markets, suggesting that inflation expectations were still upward for the time being. The deterioration in liquidity and credit conditions in the US interbank markets, although rationalised by technical factors, was also likely to fuel uncertainty. In this context, credit markets also suffered, particularly in the Investment Grade category, especially in the United States. Paradoxically, the high-yield credit bond market held up rather well, suggesting a moderate contagion of equity market pessimism to other asset classes at the end of the quarter.

Data: Bloomberg sources

Management policy

Exposure

The level of equity investment in the portfolios was generally high in a favourable economic environment and low-yield on debt products. Falling equity markets were therefore detrimental, particularly during the last quarter. Exposure to equity markets ranged from 53.3% to 61.0%, or 57.7% on average.

FCP HSBC SELECT MODERATE

Equity allocation

The impact of the trade war on European exporting companies and political uncertainties, foremost among which is Brexit, led us to curb our positions on European equities. The average weighting was 47% on average, with a high of 54% at the beginning of the year and a low of 40% at the beginning of December.

On the other hand, the additional growth brought about by the Trump administration's tax measures and the repatriation of capital prompted by the tax exemption of profits of US companies abroad were supporting factors for US assets. We increased our positions in North American equities from 20% in early February to 39% at the end of November. The average weighting was therefore 31% over the year. This position was largely beneficial to the Fund due to the outperformance of the US.

The trade war, its impact on Chinese growth, and politically motivated trade sanctions against Russia and Turkey as well as others were a source of volatility in emerging markets. Our positioning was very active: broad exposure to emerging equities in the first quarter (high of 20% at the end of March), and then a sharp reduction to 10% at the end of May and 7% in the autumn. These allocation changes were beneficial to the Fund, which avoided part of the summer market correction. Valuations returned to low levels: the MSCI Emerging Markets 12-month price-to-earnings ratio reached 10 times in early October for a 25% discount from the beginning of the year and lower than the level reached during the 2015 yuan crisis. The discount even reached 30% on the same indicator applied to MSCI China, which led us to further strengthen our positions, especially in Asia and China. Our year-end positions were 14% of the equity portion in emerging equities, which made it possible to benefit from the best relative performance of emerging markets at the end of the year.

Overall, our allocation choices contributed positively to the Fund's performance.

Selection of equity vehicles

In Europe, our vehicles were diversified throughout the year. Starting in February, we disposed of the value stocks that we preferred at the beginning of the year in favour of defensive stocks, which are more immune to a slowdown in world trade. We further strengthened defensive stocks in the middle of the year and October through the sale of small caps, which allowed us to lessen the decline at the end of the year. However, the sharp underperformance of value stocks and value small-cap funds during the summer weighed on performance.

In the US, we favoured defensive stocks, given the higher valuation of this market. Our low exposure to growth stocks, particularly Nasdaq, was a shortfall over the year. Following the decline in February caused by the first signs of inflation in the United States, we established a position in small caps, which we held until autumn, which contributed positively to performance. They were sold in favour of pharmaceutical stocks, which achieved a good fourth quarter. Our choices in emerging markets brought little value at the beginning of the year (weakness of Brazil, sanction in Russia). We gradually reallocated to a more defensive investment and then increased our positions in Asia in the last quarter via China but also India.

Among diversification funds, the Fund invested in gold-mining companies, which performed particularly well during the stock market decline at the end of the year.

FCP HSBC SELECT MODERATE

Selection of vehicles on other asset classes

Apart from equities, we sought investments with an attractive return. Our position in government bonds remained low (4.8% on average) in a context of low interest rates. We tactically exposed the portfolio to German and US debt in futures at times of high volatility.

As credit margins narrowed, we lowered our corporate credit positions, particularly from the end of August, on the highest-rated credit classes to reallocate to short-term high-yield credit on a global fund. The partial exit from better-quality credit was favourable, but high-yield credit was impacted in November by the strong rise in risk premiums.

Our diversification into convertible bonds was also detrimental to performance.

Our positions in emerging-market bonds did not perform well due to the sharp drop in emerging-market currencies during the summer.

Diversification in the HSBC GIF Multi Asset Style Factor absolute return fund was positive, with the fund delivering a 2.1% return over the year.

The contribution of currency management was positive over the year. The yen has served as a safe haven for us starting in February. We also benefited from the appreciation of the dollar from February to August before partially reducing our positions (from 20% to 12%).

Performance

At the close of the fiscal year, the Fund posted performance of -4.43% for the AC unit and -4.06% for the HC unit. The RC unit was subscribed during the year. The BC and IT units are inactive.

Past performance is not an indicator of the Fund's future performance.

Information on environmental, social, and governance quality (ESG) criteria

In accordance with Article L533-22-1 of the French monetary and financial code, the information on criteria related to meeting the social, environmental, and governance quality (ESG criteria) objectives in the investment policy is available on the management company's website at www.assetmanagement.hsbc.fr/fr.

Developments in the Fund during the fiscal year or in the future

9 February 2018, creation of the B unit

We wish to inform you of the creation of the B unit (net of retrocessions) in the Fund. Its subscription is subject to the existence of a specific remuneration agreement between the subscriber and the distributor or the portfolio manager.

FCP HSBC SELECT MODERATE

Units	ISIN code	Appropriation of distributable amounts	Currency of issue	Initial NAV	Subscribers concerned	Minimum initial subscription amount	Minimum subsequent subscription amount
B	FR0013313996	Accumulation	Euro	100 EUR	Subscription for this unit is subject to the existence of a specific remuneration agreement between the subscriber and the distributor or the portfolio manager	1 unit	Ten thousandths of units

Remuneration information

In accordance with the applicable regulations, HSBC Global Asset Management (France) has chosen to disclose the information relating to the remuneration of its personnel for all the AIFs and UCITS under French law that it manages.

The remuneration paid by HSBC Global Asset Management (France) consists of fixed remuneration and may, if economic conditions permit, include a variable component in the form of a discretionary bonus. The variable remuneration is not linked to the performance of the vehicles managed, nor is there any incentivisation on the basis of capital gains.

HSBC Global Asset Management (France) applies the HSBC Group's remuneration policy.

This Group policy incorporates a large number of the principles set out in the AIFM regulations as well as the UCITS regulations.

From 2014 onwards, HSBC Global Asset Management (France) has made adjustments to this remuneration policy in order to comply with specific rules in the AIFM regulation and then the UCITS regulation concerning the management of funds compliant with these respective regulations.

In particular, HSBC Global Asset Management (France) has introduced a mechanism for indexation of financial instruments on the basis of an index indexed to a representative basket of all UCIs for which HSBC Global Asset Management (France) is the management company with the exception of employee shareholding mutual funds for all employees who are entitled to deferred remuneration under the AIFM regulation and the UCITS regulations.

The HSBC Global Asset Management (France) remuneration policy has no impact on the risk profile of AIFs and UCITSs.

The full HSBC Global Asset Management (France) remuneration policy is available on its website at the following address: <http://www.assetmanagement.hsbc.fr/fr>.

Breakdown of the company's fixed and variable remuneration for fiscal year 2018

The information about the total remuneration paid by the management company to its personnel and the aggregate amount paid to executives and staff of the management company who have an impact on the risk profile appears in the table below.

FCP HSBC SELECT MODERATE

The beneficiaries of remuneration for fiscal year 2018 represent 345.6 people on average over the year and 336 people at the end of 2018, with 36 people identified as “Risk takers” under the AIFM Directive and as defined in the remuneration policy of HSBC Global Asset Management (France) whose time is spread across all managed portfolios, with 100 AIFs and 48 UCITSs at the end of 2018.

The details of the remuneration of staff who have an impact on the risk profile pertain to:

- Senior officials such as members of the executive committee,
- Risk takers (managers),
- Heads of sales and marketing,
- Heads of control or support functions.

HSBC Global Asset Management France	2018				TOTAL EUR
	Fixed remuneration paid in 2018	Variable remuneration paid in March 2018 (for 2017 performance) + Deferred variable remuneration acquired in 2018	Of which non-deferred variable remuneration	Of which deferred variable remuneration (*)	
All HSBC Global Asset Management (France) employees including seconded in and branches & excluding seconded out	26,094,773	10,073,693	3,637,287	1,436,406	36,168,466
Staff with an impact on the risk profile of AIFs (36 employees including seconded)**	5,647,301	4,150,777	2,515,102	1,329,389	9,798,078
Of which executives (12 employees including seconded)**	1,814,141	1,464,060	899,900	564,160	3,278,201

(*) Takes into account deferred shares vested in 2018 as well as indexed deferred cash paid in 2018.

(**) Takes into account seconded employees in proportion to time spent.

Variable remuneration does not include any payments received by employees under profit-sharing agreements or incentives schemes in 2018.

Information relating to efficient portfolio management techniques and derivatives used by the Fund, pursuant to AMF position no. 2013-06

Efficient portfolio management techniques

As of the close of the fiscal year, the Fund did not use efficient portfolio management techniques.

Derivatives

As of the close of the fiscal year, the Fund did not use derivatives.

FCP HSBC SELECT MODERATE

Overall risk

The management company has adopted the absolute VaR calculation method to measure the overall risk of the fund that it manages.

VaR is calculated according to a parametric methodology. A short-term risk model is used to represent the dynamics of market risk parameters (volatilities and correlations). This model relies on data histories of at least 250 days.

VaR is calculated for a one-sided confidence interval of 99% and a holding period of one day (VaR 99% 1 day). The VaR 99% 1 day is converted into a 99% confidence interval VaR and a holding period of 20 days (VaR 99% 20 days) according to the method recommended by the regulator.

Over the year, the VaR (99% 1 month) represented:

- average: -5.93%
- minimum: -4.89%
- maximum: -7.10%

In addition to monitoring VaR, the leverage level of the funds is also calculated.

For information purposes, leverage, calculated using the commitment calculation method, represented during the year:

- average: 11.79%
- minimum: 3.59%
- maximum: 23.55%

Main movements in the portfolio during the period

Securities	Movements ("Accounting currency")	
	Acquisitions	Disposals
HSBC EURO SH TERM BOND PART ZC	4,421,098.25	14,114,238.74
HSBC EURO GVT BOND FUND ZC	13,354,289.53	5,054,967.88
HSBC GL.INV.EUR.CURR.H.Y.Z C.	6,792,760.10	9,030,861.50
HSBC GIF-EURO CREDIT BD-ZC	10,919,850.20	4,813,000.80
HSBC MONEY ZC	9,667,552.27	3,595,695.46
HSBC EURO LIQUIDITY FD.CL.C	10,226,167.44	1,079,833.51
HSBC OBLIG INFLATION EURO ZC	6,259,835.85	4,933,600.64
HSBC GL EURO CREDIT BD TR ZC	3,130,645.90	6,128,616.00
HSBC GIF-EURO BOND-ZC	5,176,779.00	3,752,663.10
HSBC GI GL HYBD ZHC EUR C.	3,425,521.90	4,072,117.60

FCP HSBC SELECT MODERATE

Transparency of securities financing transactions and the reuse of financial instruments – SFTR regulation – in the accounting currency of the Fund (EUR)

The Fund did not perform any transactions covered by the SFTR regulation during the fiscal year.

FCP HSBC SELECT MODERATE

Regulatory information

Risk monitoring report

General observation:

Over the period under review, the risk assessment and monitoring procedures established to manage the UCI did not identify any (significant) anomaly regarding its exposure to market risk, credit risk, counterparty risk or liquidity risk.

In addition, no anomalies having a significant impact in terms of valuation risks were identified over that period.

	Significant anomalies identified relating to the closure of the UCI	Observations
1	Market Risk	None
2	Credit Risk	None
3	Counterparty Risk	None
4	Liquidity Risk	None
5	Valuation Risk	None

Financial intermediary selection and assessment procedure

The management company selects brokers or counterparties according to a procedure consistent with the applicable regulations and in particular the provisions of articles 314-69 et seq. of the General Regulation of the Autorité des Marchés Financiers (“AMF”). As part of this selection, the management company fulfils its best execution obligation at all times.

The objective selection criteria used by the Management Company specifically includes the quality of order executions, the rates applied and the financial soundness of each broker or counterparty.

The selection of counterparties, investment companies and HSBC Global Asset Management (France) service providers is made according to a specific evaluation process intended to ensure quality service is provided to the company. This is a key element in the general decision-making process which incorporates the impact of the service quality of the broker across all our departments: Management, Financial and Credit Analysis, Trading and Middle Office, Legal.

Counterparty selection can involve an entity linked to the HSBC Group or the Fund’s depositary.

The “Policy of best execution and selection of intermediaries” is detailed on the management company’s website.

FCP HSBC SELECT MODERATE

Report on brokerage fees

In accordance with article 314-82 of the General Regulations of the AMF, and if the terms of this article are met, the report on intermediation fees for the previous fiscal year is available on the management company's website: <https://www.assetmanagement.hsbc.fr/fr>.

Exercise of voting rights

The management company's voting policy, as well as the report on the conditions in which the voting rights were exercised, may be consulted on the website: <https://www.assetmanagement.hsbc.fr/fr>.

Use of financial instruments managed by the management company or a related company

The table of financial instruments managed by the management company or a related company can be found in the notes to the Fund's annual financial statements.

Conflict of interest policy

Because of its global reach and the wide range of financial services offered, HSBC Group, or its affiliated companies (referred to below as HSBC), is likely to have interests that differ from time to time from those of its clients, or that conflict with its duties with respect to its clients. There may be conflicts between the interests of HSBC, its affiliated companies, or its employees on the one hand, and the interests of its clients on the other, or even conflicts between the clients themselves.

HSBC has defined procedures which aim to identify and manage such conflicts, notably organisational and administrative arrangements intended to protect clients' interests. This policy is based on a simple principle: persons taking part in various activities posing a conflict of interest are required to execute these activities independently of each other.

Where applicable, HSBC implements measures to restrict the transmission of information to certain employees in order to protect clients' interests and to prevent any undue access to information concerning clients.

HSBC may also act on its own account and have a client as counterparty or even "match" the orders of its clients. Procedures are in place to protect clients' interests in this scenario.

In some cases, HSBC's procedures and controls may not be sufficient to ensure that a potential conflict will not damage a client's interests. In these circumstances, HSBC informs the client of the potential conflict of interest in order to obtain the client's express consent to continue the activity. In any event, HSBC may refuse to intervene in circumstances where there would ultimately be a residual risk of damaging a client's interests.

FCP HSBC SELECT MODERATE

Statutory auditor's certification on the annual financial statements



HSBC Select Moderate

Fiscal year ended 31 December 2018

Statutory auditor's report on the annual financial statements

To the Unitholders of the HSBC Select Moderate fund,

Opinion

In accordance with the assignment entrusted to us by the management company, we audited the annual financial statements of the HSBC Select Moderate undertaking for collective investment, established in the form of a mutual fund, for the fiscal year ended on 31 December 2018, as attached to this report.

We certify that, in accordance with French accounting rules and principles, the annual financial statements are consistent and accurate and present a true and fair view of the results of the operations for the past accounting period and of the Fund's financial situation and assets and liabilities at the end of said period.

Basis of the opinion

■ Audit reference standard

We conducted our audit in accordance with professional standards applicable in France. We believe that the evidence that we have collected is sufficient and appropriate to base our opinion.

Our responsibilities according to these standards are described in the section "Statutory auditor's responsibilities for the audit of the annual financial statements" of this report.

■ Independence

We conducted our audit in accordance with the rules of independence applicable to us, over the period from 1 January 2018 to the issue date of our report. In particular, we did not provide any services prohibited by the professional code of ethics for statutory auditors.



Basis for our assessments

Pursuant to the provisions of Articles L. 823-9 and R. 823-7 of the French commercial code concerning the basis for our assessments, we hereby inform you that, in our professional judgment, the most significant assessments that we conducted pertained to the appropriateness of the accounting principles applied, in particular as regards the financial instruments in the portfolio and the overall presentation of the financial statements, in view of the accounting system applicable to open-ended undertakings for collective investments.

These assessments contributed to the audit of the annual financial statements, taken as a whole, and to the formation of our opinion expressed above. We do not express an opinion on items in these annual financial statements viewed in isolation.

Specific verifications

We also performed the specific verifications required by the applicable laws and regulations in accordance with the professional standards required by law and regulation.

We have no comments to make as to the fairness and consistency with the annual financial statements of the information given in the management report prepared by the management company.

Management company's responsibilities for the annual financial statements

The management company is responsible for preparing annual financial statements presenting a true and fair view in accordance with French accounting rules and principles and implementing the internal controls that it deems necessary for the preparation of annual financial statements free of any material misstatements, whether due to fraud or error.

In connection with the preparation of the annual financial statements, the management company is responsible for assessing the Fund's ability to continue its operations, providing information on matters relating to the continued operations, where this is relevant, and preparing financial statements on a going-concern basis, unless the management company intends to wind up the Fund or discontinue its operations.

The annual financial statements were approved by the management company.

Statutory auditor's responsibilities for the audit of the annual financial statements

It is our responsibility to prepare a report on the annual financial statements. Our goal is to obtain reasonable assurance that the annual financial statements taken as a whole do not contain any material misstatements. Reasonable assurance is a high level of assurance but is not a guarantee that an audit performed in accordance with the professional auditing standards will always detect any material misstatement. Misstatements may arise as a result of fraud or error and must be regarded as being material if it can reasonably be expected that they, individually or in the aggregate, will affect the financial decisions made by users of the financial statements on the basis of the financial statements.

As specified by Article L. 823-10-1 of the French commercial code, our role of certifying the financial statements is not to guarantee the viability or the quality of the management of your Fund.



As part of an audit performed in accordance with the professional auditing standards applicable in France, the statutory auditor uses professional judgement throughout this audit. In addition:

- ▶ the statutory auditor identifies and assesses the risks that the annual financial statements contain material misstatements, whether due to fraud or error, and defines and implements audit procedures for such risks and collects evidence considered sufficient and appropriate to serve as the basis of its opinion. The risk of not detecting a material misstatement due to fraud is higher than the risk of not detecting a material misstatement due to error, as fraud may involve conspiracy, forgery, deliberate omission, misrepresentation, or non-observance of internal controls;
- ▶ the statutory auditor obtains an understanding of the internal controls of relevance to the audit in order to design audit procedures that are appropriate in the circumstances, but not to express an opinion on the effectiveness of the internal controls;
- ▶ the statutory auditor assesses the appropriateness of the accounting methods used and the reasonableness of the accounting estimates made by the management company, as well as the information concerning them provided in the annual financial statements;
- ▶ the statutory auditor assesses whether the accounting convention of going concern applied by the management company is appropriate and, according to the collective evidence, whether there is any material uncertainty related to events or circumstances likely to call into question the UCI's ability to continue its operation. This assessment is based on the evidence collected up to the date of its report. However, subsequent circumstances or events could jeopardise the continuity of operations. If a material uncertainty is found, the statutory auditor must draw the attention of the readers of its report to the information provided in the annual financial statements about this uncertainty or, if such information is not provided or is not relevant, must express a qualified certification or a refusal to certify;
- ▶ the statutory auditor assesses the overall presentation of the annual financial statements and whether they reflect the underlying transactions and events so as to give a true and fair view.

Paris-La Défense, 11 March 2019

The Statutory Auditor
ERNST & YOUNG et Autres

Youssef Boujanoui

FCP HSBC SELECT MODERATE

Annual Financial Statements

FCP HSBC SELECT MODERATE

Balance Sheet - Assets

Balance Sheet – Assets at 31/12/2018

Portfolio: HSBC SELECT MODERATE

	31/12/2018	29/12/2017
NET FIXED ASSETS		
DEPOSITS		
FINANCIAL INSTRUMENTS	92,525,267.75	106,519,704.23
Equities and equivalent securities		
Traded on a regulated or equivalent market		
Not traded on a regulated or equivalent market		
Bonds and equivalent securities		
Traded on a regulated or equivalent market		
Not traded on a regulated or equivalent market		
Debt instruments		
Traded on a regulated or equivalent market		
Negotiable debt instruments		
Other debt instruments		
Not traded on a regulated or equivalent market		
Undertakings for collective investment	92,479,025.01	106,447,666.27
UCITS and retail alternative investment funds intended for non-professional investors and equivalents in other countries	92,479,025.01	102,371,954.24
Other funds intended for non-professional investors and equivalents in other EU member states		
Professional general investment funds and equivalents in other EU member states and listed securitisation funds		4,075,712.03
Other professional investment funds and equivalent in other EU Member States and non-listed securitisation funds		
Other non-European funds		
Temporary securities transactions		
Receivables representing securities received under repurchase agreements		
Receivables representing lent securities		
Borrowed securities		
Securities delivered under repurchase agreements		
Other temporary transactions		
Financial futures	46,242.74	72,037.96
Transactions on a regulated or equivalent market	46,242.74	72,037.96
Other transactions		
Other financial instruments		
RECEIVABLES	154,419.51	5,302,930.85
Forward foreign currency transactions		5,017,523.74
Other	154,419.51	285,407.11
FINANCIAL ACCOUNTS	7,791,903.38	4,760,582.98
Cash and cash equivalents	7,791,903.38	4,760,582.98
TOTAL ASSETS	100,471,590.64	116,583,218.06

FCP HSBC SELECT MODERATE

Balance Sheet - Liabilities & Equity

Balance Sheet – Liabilities & Equity at 31/12/2018

Portfolio: HSBC SELECT MODERATE

	31/12/2018	29/12/2017
SHAREHOLDERS' EQUITY		
Capital	98,488,699.30	106,008,137.39
Prior undistributed net capital gains and losses (a)		
Retained earnings (a)		
Net capital gains and losses for the fiscal year (a, b)	-226,845.04	3,599,032.28
Earnings for the fiscal year (a, b)	-526,353.93	-294,941.18
TOTAL SHAREHOLDERS' EQUITY*	97,735,500.33	109,312,228.49
Amount representing net assets		
FINANCIAL INSTRUMENTS	61,705.78	16,352.92
Disposals involving financial instruments		
Temporary securities transactions		
Debts representing securities delivered under repurchase agreements		
Debts representing borrowed securities		
Other temporary transactions		
Financial futures	61,705.78	16,352.92
Transactions on a regulated or equivalent market	61,705.78	16,352.92
Other transactions		
DEBTS	112,394.64	5,006,819.53
Forward foreign currency transactions		4,921,175.16
Other	112,394.64	85,644.37
FINANCIAL ACCOUNTS	2,561,989.89	2,247,757.12
Current bank facilities	2,561,989.89	2,247,757.12
Loans		
TOTAL LIABILITIES	100,471,590.64	116,583,158.06

(a) Including accruals

(b) Minus interim payments for the fiscal year

FCP HSBC SELECT MODERATE

Off-balance sheet commitments

Off-balance sheet commitments at 31/12/2018

Portfolio: HSBC SELECT MODERATE

	31/12/2018	29/12/2017
HEDGING TRANSACTIONS		
Commitments on regulated or equivalent markets		
Futures contracts		
EUR DJE 600 OIL 0318		344,410.00
SP 500 MINI 0318		779,980.01
TY CBOT YST 1 0318		1,136,338.80
XEUR FGBL BUN 0318		3,395,280.00
Options		
DJ EURO STOXX 50 01/2018 PUT 3350		407,505.38
DJ EURO STOXX 50 01/2018 PUT 3500		1,637,556.84
Commitments on over-the-counter markets		
Other commitments		
OTHER TRANSACTIONS		
Commitments on regulated or equivalent markets		
Futures contracts		
CBOE VIX FUT 0219	136,399.42	
CBOE VIX FUT 0619	53,929.93	
EUR DJE 600 OIL 0319	134,190.00	
EUR XEUR FESX D 0319	802,980.00	
HKF HHI HANG SE 0119	56,434.81	
NYS NYL MSCI EM 0319	253,719.98	
SP 500 MINI 0319	438,297.69	
TY CBOT YST 1 0319	2,027,990.10	
XEUR FESX DJ 0318		3,143,700.00
XEUR FGBL BUN 0319	1,471,860.00	
XPAR FCE CAC 0119	236,425.00	
Options		
DJ EURO STOXX 50 01/2019 PUT 2900	424,303.79	
Commitments on over-the-counter markets		
Other commitments		

FCP HSBC SELECT MODERATE

Income Statement

Income statement at 31/12/2018

Portfolio: HSBC SELECT MODERATE

	31/12/2018	29/12/2017
Income from financial transactions		
Income from deposits and financial accounts	11,209.98	121.00
Income from equities and equivalent securities		58,350.00
Income from bonds and equivalent securities		
Income from debt instruments		
Income from temporary purchases and sales of securities		1,261.53
Income from financial futures		
Other financial income	235,919.10	609,882.47
TOTAL (1)	247,129.08	669,615.00
Expenses on financial transactions		
Expenses from temporary acquisitions and disposals of securities	1.66	485.99
Expenses from financial futures		
Expenses from financial debts	28,400.38	36,745.12
Other financial expenses		
TOTAL (2)	28,402.04	37,231.11
INCOME FROM FINANCIAL TRANSACTIONS (1 - 2)	218,727.04	632,383.89
Other income (3)		
Management fees and amortisation allowance (4)	816,813.84	938,176.55
NET EARNINGS FOR THE FISCAL YEAR (L. 214-17-1) (1 - 2 + 3 - 4)	-598,086.80	-305,792.66
Accrued income for the fiscal year (5)	71,732.87	10,851.48
Prepayments on earnings made during the fiscal year (6)		
EARNINGS (1 - 2 + 3 - 4 + 5 - 6)	-526,353.93	-294,941.18

FCP HSBC SELECT MODERATE

Appendices

FCP HSBC SELECT MODERATE

Notes to the Annual Financial Statements

ACCOUNTING RULES AND METHODS

The annual financial statements are presented in the form prescribed by ANC regulation 2014-01, as amended.

General accounting principles are applied:

- true and fair view, comparability, going concern;
- accuracy, reliability;
- prudence;
- consistency of accounting methods from one period to the next.

Revenues from fixed-income securities are recognised on the basis of interest actually received.

Securities bought and sold are recognised excluding costs.

The euro is the reference currency for the portfolio's accounting.

The duration of the fiscal year is 12 months.

Asset valuation rules

Financial instruments are recognised according to the historical cost method and are included on the balance sheet at their current value, which is determined by the last known market value or, if no market exists, by any external means or through the use of financial models.

Differences between the current values used when calculating the net asset value and the historical costs of the securities upon their entry into the portfolio are recorded in "Valuation differentials" accounts.

Securities that are not in the portfolio's currency are recognised in accordance with the principle set forth below then converted into the portfolio's currency according to the exchange rates in effect on the day of the valuation.

Deposits:

Deposits with a residual maturity of 3 months or less are valued according to the straight-line method.

Equities, bonds, and other securities traded on a regulated or equivalent market:

For the calculation of the net asset value, equities and other securities traded on a regulated or equivalent market are valued on the basis of the day's last market price.

Bonds and equivalent securities are valued at the closing price supplied by various financial services providers. Interest accrued on bonds and equivalent securities is calculated up to the net asset value date.

FCP HSBC SELECT MODERATE

Equities, bonds, and other securities not traded on a regulated or equivalent market:

Securities not traded on a regulated market are valued under the responsibility of the management company using methods based on the asset value and the yield, taking into consideration the prices used in recent significant transactions.

Negotiable debt instruments:

Negotiable debt instruments and equivalent securities that are not the subject of significant transactions are valued on an actuarial basis according to a reference rate defined below, plus, where applicable, a differential representative of the issuer's intrinsic characteristics:

Negotiable debt instruments with a maturity less than or equal to 1 year: Interbank rate offered in euros (Euribor); negotiable debt instruments maturing in more than 1 year: Rate of normalised annual interest Treasury bonds (BTAN) or fungible Treasury bonds (OAT) with equivalent maturity for the longest durations.

Negotiable debt securities with a remaining life less than or equal to three months may be valued according to the straight-line method.

Treasury bonds are valued at the market rate communicated daily by Banque de France.

UCIs held:

UCI units or shares are valued at the last known net asset value.

Temporary securities transactions:

Securities received under repurchase agreements are recorded in assets in 'receivables representing securities received under repurchase agreements' for the amount provided for in the contract plus accrued interest receivable.

Securities delivered under repurchase agreements are recorded in the long portfolio for their current value. Debt representing securities delivered under repurchase agreements is recorded in the short portfolio at the value set in the contract plus accrued interest payable.

Lent securities are valued at their current value and are recorded in assets in "receivables representing lent securities" at the current value plus accrued interest receivable.

Borrowed securities are recorded in assets in "borrowed securities" for the amount specified in the contract and in liabilities in "debts representing borrowed securities" for the amount specified in the contract plus accrued interest payable.

Financial futures:

Financial futures traded on a regulated or equivalent market:

Financial futures traded on regulated markets are valued at the day's settlement price.

FCP HSBC SELECT MODERATE

Financial futures not traded on a regulated or equivalent market:

Swaps:

Interest rate and/or currency swaps are valued at their market value based on the price calculated by discounting future interest flows at the market interest and/or exchange rates. This price is adjusted to take into account the issuer's creditworthiness risk.

Index swaps are valued on an actuarial basis according to a reference rate provided by the counterparty.

Other swaps are valued at their market value or at a value estimated according to the methods established by the management company.

Off-balance sheet commitments:

Futures contracts appear in off-balance sheet commitments for their market value at the price used in the portfolio.

Options are converted into the underlying equivalent.

Commitments on swaps are shown at their nominal value or, in the absence of a nominal value, for an equivalent amount.

Management fees

Management fees are calculated at each valuation on the basis of the net assets.

These fees are charged to the income statement of the Fund.

Management fees are paid in full to the management company, which is responsible for all UCI operating costs.

Management fees do not include transaction fees.

The rate applied on the basis of net assets is:

For the A unit:

Internal charges: maximum 0.80% including taxes

External charges: maximum 0.30% including taxes

For the B unit:

Internal charges: maximum 0.40% including taxes

External charges: maximum 0.30% including taxes

For the H unit:

Internal charges: maximum 0.40% including taxes

External charges: maximum 0.30% including taxes

For the R unit:

Internal charges: maximum 0.10% including taxes

External charges: maximum 0.30% including taxes

For the IT unit:

Internal charges: maximum 0.40% including taxes

External charges: maximum 0.40% including taxes

FCP HSBC SELECT MODERATE

Retrocession of management fees to be collected is taken into account at each net asset value. The funded amount is equal to the share of retrocession earned over the period in question.

Appropriation of distributable amounts

Definition of distributable amounts:

Distributable amounts consist of the following:

Earnings:

Net earnings for the fiscal year are equal to the amount of interest, arrears, premiums and bonuses, dividends, directors' fees, and any other income related to the securities comprising the portfolio, plus the income from any amounts temporarily available, less management fees and borrowing costs.

Net earnings are increased by retained earnings and increased or reduced by the balance of accrued income.

Capital gains and losses:

Capital gains realised, net of costs, less capital losses realised, net of costs, recognised during the fiscal year, plus net capital gains of the same type recognised in previous fiscal years that were not distributed or accumulated, plus or minus the balance of accrued capital gains.

Methods for appropriating distributable amounts:

Distributable amounts	"A", "B", "H", "R", "IT" units
Appropriation of net earnings	Accumulation
Appropriation of realised net capital gains or losses	Accumulation

FCP HSBC SELECT MODERATE

Change in Net Assets

Change in net assets at 31/12/2018

Portfolio: HSBC SELECT MODERATE

	31/12/2018	29/12/2017
NET ASSETS AT THE START OF THE FISCAL YEAR	109,312,288.49	117,116,933.09
Subscriptions (including subscription fees earned by the Fund)	22,811,226.83	40,384,040.34
Redemptions (after deducting redemption fees earned by the Fund)	-29,870,803.05	-48,615,457.62
Capital gains realised on deposits and financial instruments	2,672,845.88	5,307,659.17
Capital losses realised on deposits and financial instruments	-1,767,134.57	-425,104.02
Capital gains realised on financial futures	1,863,046.24	3,103,086.02
Capital losses realised on financial futures	-2,125,975.58	-1,879,743.97
Transaction fees	-31,140.44	-33,528.96
Foreign exchange gains/losses	481,465.47	-5,018,910.95
Changes in the valuation differential of deposits and financial instruments	-4,992,300.13	-381,637.89
<i>Valuation differential period N</i>	<i>-2,429,190.79</i>	<i>2,563,109.34</i>
<i>Valuation differential period N-1</i>	<i>-2,563,109.34</i>	<i>-2,944,747.23</i>
Changes in the valuation differential of financial futures	-19,932.01	60,685.94
<i>Valuation differential period N</i>	<i>30,743.93</i>	<i>50,675.94</i>
<i>Valuation differential period N-1</i>	<i>-50,675.94</i>	<i>10,010.00</i>
Distribution from previous period on net gains and losses		
Distribution from previous period on earnings		
Net earnings for period, before accruals	-598,086.80	-305,792.66
Prepayment(s) made during period on net gains and losses		
Prepayment(s) made during period on earnings		
Other items		
NET ASSETS AT THE END OF THE FISCAL YEAR	97,735,500.33	109,312,228.49

N-1: Difference between net assets at beginning of period N - net assets at end of period N-1. Meaning €109,312,228.49 at the end of fiscal year 2017 and €109,312,288.49 at the beginning of fiscal year 2018, including an adjustment of €60.00 due to an incorrect posting to the class 6 accounts.

FCP HSBC SELECT MODERATE

BREAKDOWN OF FINANCIAL INSTRUMENTS BY LEGAL OR ECONOMIC TYPE

	Amount	%
ASSETS		
BONDS AND EQUIVALENT SECURITIES		
Bonds and equivalent securities		
TOTAL BONDS AND EQUIVALENT SECURITIES		
DEBT INSTRUMENTS		
Debt instruments		
TOTAL DEBT INSTRUMENTS		
LIABILITIES & EQUITY		
DISPOSALS INVOLVING FINANCIAL INSTRUMENTS		
Equities and equivalent securities		
TOTAL DISPOSALS INVOLVING FINANCIAL INSTRUMENTS		
OFF-BALANCE SHEET COMMITMENTS		
HEDGING TRANSACTIONS		
Equities		
TOTAL HEDGING TRANSACTIONS		
OTHER TRANSACTIONS		
Equities	2,536,680.62	2.60
Rate	3,499,850.10	3.58
TOTAL OTHER TRANSACTIONS	6,036,530.72	6.18

BREAKDOWN OF ASSETS, LIABILITIES AND OFF-BALANCE SHEET ITEMS BY RATE TYPE

	Fixed rate	%	Variable rate	%	Adjustable rate	%	Other	%
Assets								
Deposits								
Bonds and equivalent securities								
Debt instruments								
Temporary securities transactions								
Financial accounts							7,791,903.38	7.97
Liabilities & Equity								
Temporary securities transactions								
Financial accounts							2,561,989.89	2.62
Off-balance sheet commitments								
Hedging transactions								
Other transactions	3,499,850.10	3.58						

FCP HSBC SELECT MODERATE

BREAKDOWN OF ASSETS, LIABILITIES AND OFF-BALANCE SHEET ITEMS BY RESIDUAL MATURITY

	< 3 months	%	[3 months -1 year]	%	[1 - 3 years]	%	[3 - 5 years]	%	> 5 years	%
Assets										
Deposits										
Bonds and equivalent securities										
Debt instruments										
Temporary securities transactions										
Financial accounts	7,791,903.38	7.97								
Liabilities & Equity										
Temporary securities transactions										
Financial accounts	2,561,989.89	2.62								
Off-balance sheet commitments										
Hedging transactions										
Other transactions									3,499,850.10	3.58

Forward-rate positions are presented according to the maturity of the underlying assets.

BREAKDOWN OF ASSETS, LIABILITIES AND OFF-BALANCE SHEET COMMITMENTS BY LISTING CURRENCY OR VALUATION CURRENCY (Excluding euro)

	Currency 1 USD	%	Currency 2 GBP	%	Currency 3 JPY	%	Currency N OTHER(S)	%
Assets								
Deposits								
Equities and equivalent securities								
Bonds and equivalent securities								
Debt instruments								
UCIs	11,162,009.62	11.42	650,223.39	0.67	132,866.90	0.14		
Temporary securities transactions								
Receivables	61,666.76	0.06					4,636.35	
Financial accounts	174,836.33	0.18	1,359,445.73	1.39	763,888.39	0.78	6,562.33	0.01
Liabilities & Equity								
Disposals involving financial instruments								
Temporary securities transactions								
Financial accounts	2,516,729.32	2.58			34,713.31	0.04	10,547.26	0.01
Off-balance sheet commitments								
Hedging transactions								
Other transactions	2,910,337.12	2.98					56,434.81	0.06

FCP HSBC SELECT MODERATE

RECEIVABLES AND PAYABLES: BREAKDOWN BY TYPE

	Debit/credit type	31/12/2018
Receivables	Cash security deposits	153,251.37
	Coupons and dividends in cash	1,168.14
Total receivables		154,419.51
Payables	Redemptions payable	- 45,701.66
	Management fees	- 66,692.98
Total payables		-112,394.64

NUMBER OF SECURITIES ISSUED OR REDEEMED

	Units	Amount
R unit		
Units subscribed during the fiscal year	17,772.6840	17,486,671.96
Units redeemed during the fiscal year	-1,783.3000	-1,751,452.52
Net balance of subscriptions/redemptions	15,989.3840	15,735,219.44
A unit		
Units subscribed during the fiscal year	79,326.2750	5,324,554.87
Units redeemed during the fiscal year	-419,979.0242	-28,119,350.53
Net balance of subscriptions/redemptions	-340,652.7492	-22,794,795.66
H unit		
Units subscribed during the fiscal year		
Units redeemed during the fiscal year		
Net balance of subscriptions/redemptions		

SUBSCRIPTION AND/OR REDEMPTION FEES

	Amount
A unit	
Redemption fees earned	
Subscription fees earned	
Total fees earned	

FCP HSBC SELECT MODERATE

SUBSCRIPTION AND/OR REDEMPTION FEES

	Amount
R unit Redemption fees earned Subscription fees earned Total fees earned	
H unit Redemption fees earned Subscription fees earned Total fees earned	

FCP HSBC SELECT MODERATE

MANAGEMENT FEES

	31/12/2018
A unit	
Guarantee fees	
Fixed management fees	727,888.12
Percentage of fixed management fees	0.88
Variable management fees	
Retrocession of management fees	0.02
R unit	
Guarantee fees	
Fixed management fees	26,189.57
Percentage of fixed management fees	0.18
Variable management fees	
Retrocession of management fees	-0.01
H unit	
Guarantee fees	
Fixed management fees	62,736.15
Percentage of fixed management fees	0.48
Variable management fees	
Retrocession of management fees	-0.01

COMMITMENTS RECEIVED AND GIVEN

Guarantees received by the Fund

None.

Other commitments received and/or given

None.

FCP HSBC SELECT MODERATE

CURRENT VALUE OF TEMPORARILY ACQUIRED FINANCIAL INSTRUMENTS

	31/12/2018
Securities under a repurchase agreement Borrowed securities	

CURRENT VALUE OF FINANCIAL INSTRUMENTS CONSTITUTING SECURITY DEPOSITS

	31/12/2018
Financial instruments given as collateral and maintained in their original line item Financial instruments received as collateral and not recorded on the balance sheet	

GROUP FINANCIAL INSTRUMENTS HELD IN THE PORTFOLIO

	ISIN code	Items	31/12/2018
Equities			
Bonds			
Negotiable debt instruments			
UCIs			82,179,792.02
	LU0164899485	ASIA EX JAPAN EQUITY SMALLER	123,631.28
	LU0164893363	ECONOMIC SCALE US EQUITY ZC	491,008.00
	LU0362711912	EUROLAND GROWTH ZC	648,774.20
	LU0234594694	Global Emerging Markets Local Debt Z Cap	2,415,254.95
	DE000A0H0RA1	HSBC EURO CREDIT SUBORDINATED	994,444.80
	FR0013216165	HSBC EURO GVT BOND FUND ZC	11,403,225.12
	IE0030819498	HSBC EURO LIQUIDITY FD.CL.C	10,510,526.92
	LU0165100685	HSBC EUROLAND EQUITY Z CAP.	883,215.00
	LU0164888108	HSBC GI CHIN EQ ZC	192,444.30
	LU1464646964	HSBC GI GL HYBD ZHC EUR C.	634,624.00
	LU0164892712	HSBC GIF INDIAN EQY ZC	220,478.41
	LU1449948840	HSBC GIF MULTI ASSET STYLE FACTORS	6,426,775.50
	LU0164880972	HSBC GIF-ASIA EX JAPN SML-ZC	181,636.00
	LU0165096552	HSBC GIF-EURO BOND-ZC	5,003,025.30
	LU1498393484	HSBC GIF-EURO CONVERT BD-ZC	3,346,352.29
	LU0165108829	HSBC GIF-EURO CREDIT BD-ZC	6,060,126.30
	LU1240778420	HSBC GIF-GL SD HY B-ZQ1HEUR	3,816,253.50
	LU0992878610	HSBC GL EURO CREDIT BD TR ZC	2,716,381.70
	LU0780248877	HSBC GL INV-IND FIX IN-ZD	481,017.36
	LU1732775397	HSBC GLB INV-ASIA BD-ZDHEUR	814,630.70

FCP HSBC SELECT MODERATE

GROUP FINANCIAL INSTRUMENTS HELD IN THE PORTFOLIO

	ISIN code	Items	31/12/2018
	LU0165093617	HSBC GL.INV.EUR.CURR.H.Y.Z C.	2,056,541.40
	LU1464645487	HSBC GLOB GL EM ZHC EUR C.	1,030,071.00
	LU1808496456	HSBC GLOBAL EMERG MKTS LOCAL	2,177,716.80
	LU1464647699	HSBC GLOBAL INVEST FUNDS GLOBAL	1,705,005.05
	LU0197775884	HSBC Global Investment Funds-Asia Pacific	289,765.68
	FR0000971277	HSBC MONEY ZC	12,967,622.87
	IE00B5VX7566	HSBC MSCI JAPAN	349,582.50
	FR0013215696	HSBC OBLIG INFLATION EURO ZC	1,296,089.60
	IE00B5KQNG97	HSBC S AND P 500 ETF	2,851,132.18
Financial futures	LU0329931686	Russia Equity Z Cap	92,439.31

FCP HSBC SELECT MODERATE

STATEMENT OF APPROPRIATION OF THE SHARE OF DISTRIBUTABLE AMOUNTS RELATED TO EARNINGS

	31/12/2018	29/12/2017
Amounts remaining to be appropriated		
Retained earnings		
Earnings	-526,353.93	-294,941.18
Total	-526,353.93	-294,941.18

	31/12/2018	29/12/2017
R unit		
Appropriation		
Distribution		
Retained earnings for the period		
Accumulation	1,702.59	
Total	1,702.59	

	31/12/2018	29/12/2017
A unit		
Appropriation		
Distribution		
Retained earnings for the period		
Accumulation	-491,517.76	-306,032.37
Total	-491,517.76	-306,032.37

	31/12/2018	29/12/2017
H unit		
Appropriation		
Distribution		
Retained earnings for the period		
Accumulation	-36,538.76	11,151.19
Total	-36,538.76	11,151.19

FCP HSBC SELECT MODERATE

STATEMENT OF APPROPRIATION OF THE SHARE OF DISTRIBUTABLE AMOUNTS RELATED TO NET CAPITAL GAINS AND LOSSES

	31/12/2018	29/12/2017
Amounts remaining to be appropriated		
Past net gains and losses not distributed		
Net gains and losses for the period	-226,845.04	3,599,032.28
Prepayments made on net gains and losses for the period		
Total	-226,845.04	3,599,032.28

	31/12/2018	29/12/2017
R unit		
Appropriation		
Distribution		
Net gains and losses not distributed		
Accumulation	-65,226.37	
Total	-65,226.37	

	31/12/2018	29/12/2017
A unit		
Appropriation		
Distribution		
Net gains and losses not distributed		
Accumulation	-136,970.04	3,167,811.55
Total	-136,970.04	3,167,811.55

	31/12/2018	29/12/2017
H unit		
Appropriation		
Distribution		
Net gains and losses not distributed		
Accumulation	-24,648.63	431,220.73
Total	-24,648.63	431,220.73

FCP HSBC SELECT MODERATE

EARNINGS AND OTHER CHARACTERISTIC FEATURES OF THE ENTITY DURING THE LAST FIVE FISCAL YEARS

	31/12/2014	31/12/2015	30/12/2016	29/12/2017	31/12/2018
Total net assets in EUR	70,047,686.21	124,987,949.65	117,116,933.09	109,312,288.49	97,735,500.33
HSBC SELECT MODERATE R					
Net assets in EUR					15,341,643.43
Number of securities					15,989.3840
Net asset value per unit in EUR					959.48
Unit accumulation on net gains and losses in EUR					-4.07
Unit accumulation in EUR on earnings					0.10
HSBC SELECT MODERATE A					
Net assets in EUR	70,047,686.21	112,308,678.36	104,098,031.70	96,184,485.47	69,798,765.59
Number of securities	1,078,403.6100	1,698,140.0300	1,539,058.5538	1,415,945.8092	1,075,293.0600
Net asset value per unit in EUR	64.95	66.13	67.63	67.92	64.91
Unit accumulation on net gains and losses in EUR	3.88	1.84	-0.40	2.23	-0.12
Unit accumulation in EUR on earnings	-0.34	-0.50	-0.45	-0.21	-0.45
HSBC SELECT MODERATE H					
Net assets in EUR		12,679,271.29	13,018,901.39	13,127,803.02	12,595,091.31
Number of securities		126.7700	126.7700	126.7700	126.7700
Net asset value per unit in EUR		100,017.91	102,697.02	103,556.07	99,353.87
Unit accumulation on net gains and losses in EUR		-900.91	-603.28	3,401.59	-194.43
Unit accumulation in EUR on earnings		-70.74	-288.99	87.96	-288.22

FCP HSBC SELECT MODERATE

Detailed inventory of financial instruments

Description of the securities	Currency	Qty no. or nominal	Present value	% Net Assets
Undertakings for collective investment				
UCITS and retail alternative investment funds intended for non-professional investors and equivalents in other countries				
GERMANY				
HSBC EURO CREDIT SUBORDINATED BOND ID	EUR	13,920	994,444.80	1.01
ISHARES MSCI JAPAN SC-INC	JPY	4187	132,866.90	0.14
TOTAL GERMANY			1,127,311.70	1.15
FRANCE				
HSBC EURO GVT BOND FUND ZC	EUR	11,103	11,403,225.12	11.67
HSBC MONEY ZC	EUR	9,390	12,967,622.87	13.26
HSBC OBLIG INFLATION EURO ZC	EUR	1,280	1,296,089.60	1.33
MULTI UNITS FRANCE SICAV LYXOR IBEX 35 (DR) UCITS ETF	EUR	3,900	328,809.00	0.34
TOTAL FRANCE			25,995,746.59	26.60
IRELAND				
HSBC MSCI JAPAN	EUR	13,500	349,582.50	0.36
HSBC S AND P 500 ETF	USD	128,647	2,851,132.18	2.91
INVESCO EQQQ NASDAQ-100 UCITS ETF	GBP	4,800	650,223.39	0.67
ISH EDGE MSCI EU MOMENTUM FCTR UCTS ETF	EUR	94,700	534,723.55	0.55
ISHARES EDGE MSCI EM MIN VOL	USD	15,700	390,731.75	0.40
ISHARES EDGE MSCI EUROPE MIN VOL	EUR	13,000	513,987.50	0.53
ISHARES EDGE MSCI USA QUALITY FACTOR UCITS ETF	USD	97,500	507,372.72	0.52
ISHARES EDGE S P 500 MIN VOL	USD	15,300	641,230.81	0.66
ISHARES MSCI EUROPE EX-UK	EUR	16,100	449,753.50	0.46
ISHARES OIL & GAS E&P	USD	7,900	101,017.58	0.10
iShares PLC - iShares Core MSCI EM IMI UCITS ETF	USD	46,040	1,045,530.68	1.07
ISHARES S P ENERGY SECTOR	USD	78,700	317,065.00	0.32
ISHARES S P FINANCIALS SCTR	USD	25,000	137,230.46	0.14
ISHARES SP COMMODITY PRODUCERS GOLD	USD	25,400	195,696.54	0.20
ISHARES SP 500 HEALTH CARE	USD	39,600	216,074.01	0.22
SPDR EURO STOXX LOW VOL UCIT	EUR	17,800	623,979.00	0.64
TOTAL IRELAND			9,525,331.17	9.75
LUXEMBOURG				
ASIA EX JAPAN EQUITY SMALLER COMPANIES Z	USD	11,300	123,631.28	0.13
DB X-TRACKERS EURO STOXX 50	EUR	68,200	2,373,019.00	2.43
ECONOMIC SCALE US EQUITY ZC	USD	49,800	491,008.00	0.50
EUROLAND GROWTH ZC	EUR	53,800	648,774.20	0.66
Global Emerging Markets Local Debt Z Cap	USD	272,100	2,415,254.95	2.47
HSBC EURO LIQUIDITY FD.CL.C	EUR	8,572,743.89	10,510,526.92	10.76

FCP HSBC SELECT MODERATE

Description of the securities	Currency	Qty no. or nominal	Present value	% Net Assets
HSBC EUROLAND EQUITY Z CAP.	EUR	19,000	883,215.00	0.90
HSBC GI CHIN EQ ZC	USD	2,300	192,444.30	0.20
HSBC GI GL HYBD ZHC EUR C.	EUR	64,000	634,624.00	0.65
HSBC GIF INDIAN EQY ZC	USD	25,700	220,478.41	0.23
HSBC GIF MULTI ASSET STYLE FACTORS ZC	EUR	631,500	6,426,775.50	6.59
HSBC GIF-ASIA EX JAPN SML-ZC	EUR	3,500	181,636.00	0.19
HSBC GIF-EURO BOND-ZC	EUR	432,900	5,003,025.30	5.12
HSBC GIF-EURO CONVERT BD-ZC	EUR	356,298.157	3,346,352.29	3.42
HSBC GIF-EURO CREDIT BD-ZC	EUR	564100	6,060,126.30	6.20
HSBC GIF-GL SD HY B-ZQ1HEUR	EUR	411,900	3,816,253.50	3.90
HSBC GIF-RMB FIXED INCOME Z USD CAP	USD	51,300	452,888.60	0.46
HSBC GL EURO CREDIT BD TR ZC	EUR	238,300	2,716,381.70	2.78
HSBC GL INV-IND FIX IN-ZD	USD	53,000	481,017.36	0.49
HSBC GLB INV-ASIA BD-ZDHEUR	EUR	81,700	814,630.70	0.83
HSBC GL.INV.EUR.CURR.H.Y.Z C.	EUR	42,300	2,056,541.40	2.10
HSBC GLOB GL EM ZHC EUR C.	EUR	108,600	1,030,071.00	1.05
HSBC GLOBAL EMERG MKTS LOCAL CURR RATES ZO EUR	EUR	230,300	2,177,716.80	2.23
HSBC GLOBAL INVEST FUNDS GLOBAL INFLATION LINKED BOND ZCHEUR	EUR	171,030.7	1,705,005.05	1.74
HSBC Global Investment Funds - Asia Pacific ex Japan Equity	USD	18,268.566	289,765.68	0.30
LIF MSCI EMUJ VAL (DR)-C-EUR- CAP	EUR	6,900	687,033.00	0.70
Russia Equity Z Cap	USD	8,500	92,439.31	0.09
TOTAL LUXEMBOURG			55,830,635.55	57.12
TOTAL UCITS and retail alternative investment funds intended for non-professional investors and equivalents in other countries			92,479,025.01	94.62
TOTAL Undertakings for collective investment			92,479,025.01	94.62
Financial futures				
Futures				
Futures on a regulated or equivalent market				
CBOE VIX FUT 0219	USD	7	1,946.38	
CBOE VIX FUT 0619	USD	-3	131.22	
EUR DJE 600 OIL 0319	EUR	9	-5,535.00	-0.01
EURXEUR FESXD0319	EUR	-27	22,410.00	0.03
H KF HHI HANG SE 0119	HKD	1	-435.75	
NYS NYL MSCI EM 0319	USD	6	-2,694.31	
SP 500 MINI 0319	USD	4	2,046.98	
TY CBOT YST1 0319	USD	19	19,272.41	0.02
XEUR FGBL BUN 0319	EUR	9	-1,170.00	
XPAR FCE CAC 0119	EUR	5	-340.00	
TOTAL Futures on a regulated market			35,631.93	0.04
TOTAL Futures			35,631.93	0.04

FCP HSBC SELECT MODERATE

Description of the securities	Currency	Qty no. or nominal	Present value	% Net Assets
Conditional commitments				
Conditional commitments on a regulated or equivalent market				
DJ EURO STOXX 50 01/2019 PUT 2900	EUR	-47	-15,463.00	-0.02
TOTAL Conditional commitments on a regulated market			-15,463.00	-0.02
TOTAL Conditional commitments			-15,463.00	-0.02
TOTAL Financial futures			20,168.93	0.02
Margin calls				
C.A.Indo margin calls in Hong Kong \$	HKD	3,900	435.75	
C.A.Indo margin calls in US\$	USD	-23,666.33	-20,702.73	-0.02
C.A.Indo margin calls in euros	EUR	-15,364.99	-15,364.99	-0.02
TOTAL Margin calls			-35,631.97	-0.04
Receivables			154,419.51	0.16
Payables			-112,394.64	-0.11
Financial accounts			5,229,913.49	5.35
Net assets			97,735,500.33	100.00

HSBC SELECT MODERATE A	EUR	1,075,293.0600	64.91
HSBC SELECT MODERATE H	EUR	126.7700	99,353.87
HSBC SELECT MODERATE R	EUR	15,989.3840	959.48

Key Investor Information

This document provides key information about this UCITS to investors. It is not a marketing document. The information that it contains is provided to you in accordance with a legal obligation in order to allow you to understand what an investment in this fund involves and what risks are associated with it. It is recommended that you read it in order to make an informed investment decision.

HSBC SELECT MODERATE

H unit: ISIN code: FR0011883305

Management Company: HSBC Global Asset Management (France)

Objectives and investment policy

Description of the objectives and investment policy:

- ▶ The objective of the mutual fund is to offer flexible management on equity and interest rate markets over a minimum investment period of 3 years. Despite operating within larger allocation limits, the mutual fund's profile may be compared with an allocation made up of 20% equities and 80% public and private bonds on average, invested in developed markets with a euro bias as well as in emerging markets for diversifications.
- ▶ The investment strategy is discretionary and is based on a portfolio management process organised around three pillars:
 - a medium/long-term strategic asset allocation depending on the manager's level of conviction (asset classes, geographical areas, sectors),
 - a tactical allocation resulting from the short-term convictions of the manager, who will strive to take advantage of any market opportunities,
 - a selection of undertakings for collective investment (UCI) and managers likely, according to us, to generate performance over time.

Key features of the UCITS:

- ▶ Up to 100% of the mutual fund's assets are invested in units or shares of French or European UCI, managed primarily by the HSBC Group, with the following allocation limits:
 - *Equity UCI*: up to 25% of the mutual fund's assets, without any predefined minimum, invested in all sectors and all capitalisations.
 - *Fixed-income product UCI*: up to 90% of the Fund's assets, without any predefined minimum, divided between government securities and corporate securities, European or international, investment grade or high yield (riskier securities due to their low rating), or deemed equivalent by the Management Company (up to 30% of the Fund's assets), emerging debt (in the same proportions), as well as convertible bonds.

The Management Company does not exclusively or mechanically use ratings provided by credit rating agencies and favours its own credit risk analysis to assess the credit quality of the assets and in the selection of securities to purchase or sell.

- ▶ The mutual fund may also invest up to 20% of its assets in diversified and/or flexible UCI as part of "absolute return" strategies.
 - ▶ The mutual fund may also use French or European index-based UCI or trackers (French or European UCITS funds or AIFs).
 - ▶ Up to 75% of the mutual fund's assets may bear a currency risk.
 - ▶ The mutual fund may borrow cash up to 10% for cash flow imbalance reasons.
 - ▶ The mutual fund may invest in financial contracts, on regulated, organised, or OTC markets (swaps, futures, options or exchange forwards) for the purposes of hedging of and/or exposure to equity risk, interest rate risk, and/or currency risk.
 - ▶ The distributable amounts of the H unit are fully accumulated.
 - ▶ Minimum recommended investment period: more than 3 years.
 - ▶ Subscription and redemption requests are accepted at any time until 12:00 p.m. and executed daily on the basis of the next net asset value (i.e. at an unknown price).
- Settlements relating to subscription requests are carried out on the second business day following the date of establishment of the net asset value. Settlements relating to redemption requests are carried out on the third business day following the date of establishment of the net asset value.

Risk and return profile

Lower risk, Higher risk,
Potentially lower return Potentially higher return

1	2	3	4	5	6	7
---	---	---	---	---	---	---

- ▶ Historical data, such as data used to calculate the composite indicator, may not be a reliable indication of the future risk profile of the UCITS.
- ▶ The category of risk associated with this UCITS is not guaranteed and may change over time.
- ▶ The lowest category does not mean that the product is "risk-free". The mutual fund is classified in category 3. This classification corresponds to a variable combination of exposure to equity and bond markets.

- ▶ The following risks, not taken into account in the indicator, may also have an impact on the net asset value of the UCITS:

Credit risk: risk that the financial situation of the issuer of a bond or a debt instrument will deteriorate, the extreme risk being the risk of default of the issuer.

Risk associated with financial contracts: the use of financial futures may lead to replicating, increasing, or reducing an exposure to markets, indices, assets, etc. The Fund's net asset value may thus, in some cases, change in a way different from that of the underlying markets to which the Fund is exposed.

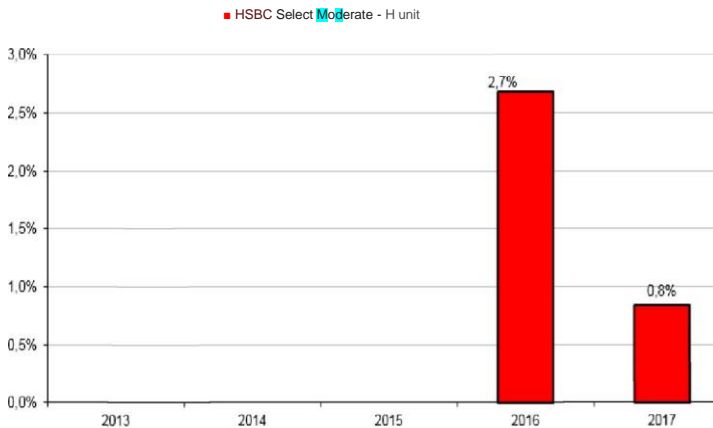
Fees

"Fees and commissions charged are used to cover the operating costs of the UCITS, including the costs of marketing and distributing units. These fees reduce the potential growth of investments."

One-off fees deducted before or after investment	
Entry fees	2.00%
Exit fees	None
The indicated percentage is the maximum that may be deducted from your capital before it is invested. Investors may obtain the actual amount of entry and exit fees from their adviser or distributor.	
Fees deducted by the UCITS over a year	
Ongoing fees	0.65%
Fees deducted by the UCITS under certain circumstances	
Performance commission	None

- ▶ Ongoing fees are based on the preceding accounting period, which closed in December 2017, and may vary from one period to the next.
- ▶ For more information on fees, please refer to the "fees" section of the prospectus of this UCITS available at: <http://www.assetmanagement.hsbc.com/fr>
- ▶ Ongoing fees do not include performance commissions and intermediation fees except in case of entry and/or exit fees paid by the UCITS when it buys or sells units of another collective management vehicle.

Past performance



- ▶ Past performance is not a reliable indicator of future performance. Past performance figures have been calculated in euros.
- ▶ The calculation of past performance takes account of all fees except any entry and exit fees.
- ▶ Performance figures are calculated with net coupons reinvested for the mutual fund and gross dividends reinvested for the index.
- ▶ The UCITS was created on 7 January 2009.
- ▶ The H unit was created on 25 September 2014.
- ▶ The H unit was activated on 03 September 2015.

Helpful information

- ▶ Custodian: CACEIS Bank
- ▶ The UCITS's information documents (prospectus/annual report/half-yearly document) are available in French free of charge upon request sent to HSBC Global Asset Management's client services by email: hsbc.client.services-am@hsbc.fr
- ▶ The net asset value can be obtained from the Management Company.
- ▶ Taxation: Accumulation unit.
- ▶ The tax laws in the UCITS's country of residence could have an impact on investors.
- ▶ The information documents for other unit classes (prospectus / annual report / half-yearly document) are available in French free of charge upon request sent to the Management Company's client services by email: hsbc.client.services-am@hsbc.fr:
 - HSBC Select Moderate, A unit (ISIN code: FR0007036942)
 - HSBC Select Moderate, R unit (ISIN code: FR0013269883)
 - HSBC Select Moderate, B unit (ISIN code: FR0013314002)
 - HSBC Select Moderate, IT unit (ISIN code: FR0013234929)
- ▶ HSBC Global Asset Management (France) can only be held responsible on the basis of statements contained in this document that are misleading, inaccurate, or inconsistent with the corresponding sections of the UCITS prospectus.
- ▶ This fund is not open to residents of the United States of America/"US Persons" (the definition can be found in the prospectus).
- ▶ Details of the management company's updated remuneration policy are available on its website at www.assetmanagement.hsbc.com/fr or, at no cost, by requesting a copy in writing from the management company. These details contain the method used to calculate the remuneration and benefits granted to certain employees, the bodies responsible for allocating remuneration, and the composition of the remuneration committee.

This UCITS is approved in France and regulated by the French financial markets authority (AMF).

HSBC Global Asset Management (France) is approved in France and regulated by the AMF.

The key investor information provided here is accurate and up to date as of 17 April 2018.

Key Investor Information

This document provides key information about this UCITS to investors. It is not a marketing document. The information that it contains is provided to you in accordance with a legal obligation in order to allow you to understand what an investment in this fund involves and what risks are associated with it. It is recommended that you read it in order to make an informed investment decision.

HSBC SELECT MODERATE

R unit: ISIN code: FR0013269883

Management Company: HSBC Global Asset Management (France)

Objectives and investment policy

Description of the objectives and investment policy:

- ▶ The objective of the mutual fund is to offer flexible management on equity and interest rate markets over a minimum investment period of 3 years. Despite operating within larger allocation limits, the mutual fund's profile may be compared with an allocation made up of 20% equities and 80% public and private bonds on average, invested in developed markets with a euro bias as well as in emerging markets for diversifications.
- ▶ The investment strategy is discretionary and is based on a portfolio management process organised around three pillars:
 - a medium/long-term strategic asset allocation depending on the manager's level of conviction (asset classes, geographical areas, sectors),
 - a tactical allocation resulting from the short-term convictions of the manager, who will strive to take advantage of any market opportunities,
 - a selection of undertakings for collective investment (UCI) and managers likely, according to us, to generate performance over time.

Key features of the UCITS:

- ▶ Up to 100% of the mutual fund's assets are invested in units or shares of French or European UCI, managed primarily by the HSBC Group, with the following allocation limits:
 - *Equity UCI*: up to 25% of the mutual fund's assets, without any predefined minimum, invested in all sectors and all capitalisations.
 - Fixed-income product UCI: up to 90% of the Fund's assets, without any predefined minimum, divided between government securities and corporate securities, European or international, investment grade or *high yield* (riskier securities due to their low rating), or deemed

equivalent by the Management Company (up to 30% of the Fund's assets), emerging debt (in the same proportions), as well as convertible bonds.

The Management Company does not exclusively or mechanically use ratings provided by credit rating agencies and favours its own credit risk analysis to assess the credit quality of the assets and in the selection of securities to purchase or sell.

- ▶ The mutual fund may also invest up to 20% of its assets in diversified and/or flexible UCI as part of "absolute return" strategies.
- ▶ The mutual fund may also use French or European index-based UCI or trackers (French or European UCITS funds or AIFs).
- ▶ Up to 75% of the mutual fund's assets may bear a currency risk.
- ▶ The mutual fund may borrow cash up to 10% for cash flow imbalance reasons.
- ▶ The mutual fund may invest in financial contracts, on regulated, organised, or OTC markets (swaps, futures, options or exchange forwards) for the purposes of hedging of and/or exposure to equity risk, interest rate risk, and/or currency risk.
- ▶ The distributable amounts of the R unit are fully accumulated.
- ▶ Minimum recommended investment period: more than 3 years.
- ▶ Subscription and redemption requests are accepted at any time until 12:00 p.m. and executed daily on the basis of the next net asset value (i.e. at an unknown price).

Settlements relating to subscription requests are carried out on the second business day following the date of establishment of the net asset value. Settlements relating to redemption requests are carried out on the third business day following the date of establishment of the net asset value.

Risk and return profile

Lower risk, Higher risk,

Potentially lower return Potentially higher return

1	2	3	4	5	6	7
---	---	---	---	---	---	---

- ▶ Historical data, such as data used to calculate the composite indicator, may not be a reliable indication of the future risk profile of the UCITS.
- ▶ The category of risk associated with this UCITS is not guaranteed and may change over time.
- ▶ The lowest category does not mean that the product is "risk-free". The mutual fund is classified in category 3. This classification corresponds to a variable combination of exposure to equity and bond markets.

- ▶ The following risks, not taken into account in the indicator, may also have an impact on the net asset value of the UCITS:

Credit risk: risk that the financial situation of the issuer of a bond or a debt security will deteriorate, the extreme risk being the risk of default of the issuer.

Risk associated with financial contracts: the use of financial futures may lead to replicating, increasing, or reducing an exposure to markets, indices, assets, etc. The Fund's net asset value may thus, in some cases, change in a way different from that of the underlying markets to which the Fund is exposed.

Fees

"Fees and commissions charged are used to cover the operating costs of the UCITS, including the costs of marketing and distributing units. These fees reduce the potential growth of investments."

One-off fees deducted before or after investment	
Entry fees	6% maximum (*)
Exit fees	None
The indicated percentage is the maximum that may be deducted from your capital before it is invested. Investors may obtain the actual amount of entry and exit fees from their adviser or distributor.	
Fees deducted by the UCITS over a year	
Ongoing fees	0.37%
Fees deducted by the UCITS under certain circumstances	
Performance commission	None

(*) With the exception of UCIs and mandates of HSBC Global Asset Management (France)

- ▶ Ongoing fees are based on an estimate of the maximum that will be deducted. This percentage may vary from one year to the next.
- ▶ For more information on fees, please refer to the "fees" section of the prospectus of this UCITS available at: <http://www.assetmanagement.hsbc.com/fr>
- ▶ Ongoing fees do not include performance commissions and intermediation fees except in case of entry and/or exit fees paid by the UCITS when it buys or sells units of another management vehicle.

Past performance

Too little data is available to provide investors with useful indications on past performance.

- ▶ Past performance is not a reliable indicator of future performance. Past performance figures have been calculated in euros.
- ▶ The calculation of past performance takes account of all fees except any entry and exit fees.
- ▶ Performance figures are calculated with net coupons reinvested for the mutual fund and gross dividends reinvested for the index.
- ▶ The UCITS was created on 07 January 2009.
- ▶ The R unit was created on 01 August 2017.

Helpful information

- ▶ Custodian: CACEIS Bank
- ▶ The UCITS's information documents (prospectus/annual report/half-yearly document) are available in French free of charge upon request sent to HSBC Global Asset Management's client services by email: hsbc.client.services-am@hsbc.fr
- ▶ The net asset value can be obtained from the Management Company.
- ▶ Taxation: Accumulation unit.
- ▶ The tax laws in the UCITS's country of residence could have an impact on investors.
- ▶ The information documents for other unit classes (prospectus / annual report / half-yearly document) are available in French free of charge upon request sent to the Management Company's client services by email: hsbc.client.services-am@hsbc.fr:
 - HSBC Select Moderate, A unit (ISIN code: FR0007036942)
 - HSBC Select Moderate, H unit (ISIN code: FR0011883305)
 - HSBC Select Moderate, B unit (ISIN code: FR0013314002)
 - HSBC Select Moderate, IT unit (ISIN code: FR0013234929)
- ▶ HSBC Global Asset Management (France) can only be held responsible on the basis of statements contained in this document that are misleading, inaccurate, or inconsistent with the corresponding sections of the UCITS prospectus.
- ▶ This fund is not open to residents of the United States of America/"US Persons" (the definition can be found in the prospectus).
- ▶ Details of the management company's updated remuneration policy are available on its website at www.assetmanagement.hsbc.com/fr or, at no cost, by requesting a copy in writing from the management company. These details contain the method used to calculate the remuneration and benefits granted to certain employees, the bodies responsible for allocating remuneration, and the composition of the remuneration committee.

**This UCITS is approved in France and regulated by the French financial markets authority (AMF).
HSBC Global Asset Management (France) is approved in France and regulated by the AMF.
The key investor information provided here is accurate and up to date as at 09 February 2018.**

Key Investor Information

This document provides key information about this UCITS to investors. It is not a marketing document. The information that it contains is provided to you in accordance with a legal obligation in order to allow you to understand what an investment in this fund involves and what risks are associated with it. It is recommended that you read it in order to make an informed investment decision.

HSBC SELECT MODERATE

B unit: ISIN code: FR0013314002

Management Company: HSBC Global Asset Management (France)

Objectives and investment policy

Description of the objectives and investment policy:

- ▶ The objective of the mutual fund is to offer flexible management on equity and interest rate markets over a minimum investment period of 3 years. Despite operating within larger allocation limits, the mutual fund's profile may be compared with an allocation made up of 20% equities and 80% public and private bonds on average, invested in developed markets with a euro bias as well as in emerging markets for diversifications.
- ▶ The investment strategy is discretionary and is based on a portfolio management process organised around three pillars:
 - a medium/long-term strategic asset allocation depending on the manager's level of conviction (asset classes, geographical areas, sectors),
 - a tactical allocation resulting from the short-term convictions of the manager, who will strive to take advantage of any market opportunities,
 - a selection of undertakings for collective investment (UCI) and managers likely, according to us, to generate performance over time.

Key features of the UCITS:

- ▶ Up to 100% of the mutual fund's assets are invested in units or shares of French or European UCI, managed primarily by the HSBC Group, with the following allocation limits:
 - *Equity UCI*: up to 25% of the mutual fund's assets, without any predefined minimum, invested in all sectors and all capitalisations.
 - Fixed-income product UCI: up to 90% of the Fund's assets, without any predefined minimum, divided between government securities and corporate securities, European or international, investment grade or *high yield* (*riskier securities due to their low rating*), or deemed

equivalent by the Management Company (up to 30% of the Fund's assets), emerging debt (in the same proportions), as well as convertible bonds.

The Management Company does not exclusively or mechanically use ratings provided by credit rating agencies and favours its own credit risk analysis to assess the credit quality of the assets and in the selection of securities to purchase or sell.

- ▶ The mutual fund may also invest up to 20% of its assets in diversified and/or flexible UCI as part of "absolute return" strategies.
- ▶ The mutual fund may also use French or European index-based UCI or trackers (French or European UCITS funds or AIFs).
- ▶ Up to 75% of the mutual fund's assets may bear a currency risk.
- ▶ The mutual fund may borrow cash up to 10% for cash flow imbalance reasons.
- ▶ The mutual fund may invest in financial contracts, on regulated, organised, or OTC markets (swaps, futures, options or exchange forwards) for the purposes of hedging of and/or exposure to equity risk, interest rate risk, and/or currency risk.
- ▶ The distributable amounts of the B unit are fully accumulated.
- ▶ Minimum recommended investment period: more than 3 years.
- ▶ Subscription and redemption requests are accepted at any time until 12:00 p.m. and executed daily on the basis of the next net asset value (i.e. at an unknown price).

Settlements relating to subscription requests are carried out on the second business day following the date of establishment of the net asset value. Settlements relating to redemption requests are carried out on the third business day following the date of establishment of the net asset value.

Risk and return profile

Lower risk, Higher risk,
Potentially lower return Potentially higher return

1	2	3	4	5	6	7
---	---	---	---	---	---	---

- ▶ Historical data, such as data used to calculate the composite indicator, may not be a reliable indication of the future risk profile of the UCITS.
- ▶ The category of risk associated with this UCITS is not guaranteed and may change over time.
- ▶ The lowest category does not mean that the product is "risk-free". The mutual fund is classified in category 3. This classification corresponds to a variable combination of exposure to equity and bond markets.

- ▶ The following risks, not taken into account in the indicator, may also have an impact on the net asset value of the UCITS:

Credit risk: risk that the financial situation of the issuer of a bond or a debt security will deteriorate, the extreme risk being the risk of default of the issuer.

Risk associated with financial contracts: the use of financial futures may lead to replicating, increasing, or reducing an exposure to markets, indices, assets, etc. The Fund's net asset value may thus, in some cases, change in a way different from that of the underlying markets to which the Fund is exposed.

Fees

"Fees and commissions charged are used to cover the operating costs of the UCITS, including the costs of marketing and distributing units. These fees reduce the potential growth of investments."

One-off fees deducted before or after investment	
Entry fees	2% maximum
Exit fees	None
The indicated percentage is the maximum that may be deducted from your capital before it is invested. Investors may obtain the actual amount of entry and exit fees from their adviser or distributor.	
Fees deducted by the UCITS over a year	
Ongoing fees	0.66%
Fees deducted by the UCITS under certain circumstances	
Performance commission	None

- ▶ Ongoing fees are based on an estimate of the maximum that will be deducted. This percentage may vary from one year to the next.
- ▶ For more information on fees, please refer to the "fees" section of the prospectus of this UCITS available at: <http://www.assetmanagement.hsbc.com/fr>
- ▶ Ongoing fees do not include performance commissions and intermediation fees except in case of entry and/or exit fees paid by the UCITS when it buys or sells units of another management vehicle.

Past performance

Too little data is available to provide investors with useful indications on past performance.

- ▶ Past performance is not a reliable indicator of future performance. Past performance figures have been calculated in euros.
- ▶ The calculation of past performance takes account of all fees except any entry and exit fees.
- ▶ Performance figures are calculated with net coupons reinvested for the mutual fund and gross dividends reinvested for the index.
- ▶ The UCITS was created on 07 January 2009.
- ▶ The B unit was created on 08 February 2018.

Helpful information

- ▶ Custodian: CACEIS Bank
- ▶ The UCITS's information documents (prospectus/annual report/half-yearly document) are available in French free of charge upon request sent to HSBC Global Asset Management's client services by email: hsbc.client.services-am@hsbc.fr
- ▶ The net asset value can be obtained from the Management Company.
- ▶ Taxation: Accumulation unit.
- ▶ The tax laws in the UCITS's country of residence could have an impact on investors.
- ▶ The information documents for other unit classes (prospectus / annual report / half-yearly document) are available in French free of charge upon request sent to the Management Company's client services by email: hsbc.client.services-am@hsbc.fr :
 - HSBC Select Moderate, A unit (ISIN code: FR0007036942)
 - HSBC Select Moderate, H unit (ISIN code: FR0011883305)
 - HSBC Select Moderate, R unit (ISIN code: FR0013269883)
 - HSBC Select Moderate, IT unit (ISIN code: FR0013234929)
- ▶ HSBC Global Asset Management (France) can only be held responsible on the basis of statements contained in this document that are misleading, inaccurate, or inconsistent with the corresponding sections of the UCITS prospectus.
- ▶ This fund is not open to residents of the United States of America/"US Persons" (the definition can be found in the prospectus).
- ▶ Details of the management company's updated remuneration policy are available on its website at www.assetmanagement.hsbc.com/fr or, at no cost, by requesting a copy in writing from the management company. These details contain the method used to calculate the remuneration and benefits granted to certain employees, the bodies responsible for allocating remuneration, and the composition of the remuneration committee.

This UCITS is approved in France and regulated by the French financial markets authority (AMF).

HSBC Global Asset Management (France) is approved in France and regulated by the AMF.

The key investor information provided here is accurate and up to date as of 09 February 2018.

Key Investor Information

This document provides key information about this UCITS to investors. It is not a marketing document. The information that it contains is provided to you in accordance with a legal obligation in order to allow you to understand what an investment in this fund involves and what risks are associated with it. It is recommended that you read it in order to make an informed investment decision”.

HSBC SELECT MODERATE

IT units: ISIN code: FR0013234929

Management Company: HSBC Global Asset Management (France)

Objectives and investment policy

Description of the objectives and investment policy:

- ▶ The objective of the mutual fund is to offer flexible management on equity and interest rate markets over a minimum investment period of 3 years. Despite operating within larger allocation limits, the mutual fund's profile may be compared with an allocation made up of 20% equities and 80% public and private bonds on average, invested in developed markets with a euro bias as well as in emerging markets for diversifications.
- ▶ The investment strategy is discretionary and is based on a portfolio management process organised around three pillars:
 - a medium/long-term strategic asset allocation depending on the manager's level of conviction (asset classes, geographical areas, sectors),
 - a tactical allocation resulting from the short-term convictions of the manager, who will strive to take advantage of any market opportunities,
 - a selection of undertakings for collective investment (UCI) and managers likely, according to us, to generate performance over time.

Key features of the UCITS:

- ▶ Up to 100% of the mutual fund's assets are invested in units or shares of French or European UCI, managed primarily by the HSBC Group, with the following allocation limits:
 - *Equity UCI*: up to 25% of the mutual fund's assets, without any predefined minimum, invested in all sectors and all capitalisations.
 - *Fixed-income product UCI*: up to 90% of the Fund's assets, without any predefined minimum, divided between government securities and corporate securities, European or international, investment grade or high yield (riskier securities due to their low rating), or deemed equivalent by the Management Company (up to 30% of the Fund's assets), emerging debt (in the same proportions), as well as convertible bonds.

Higher risk,

Lower risk,

Potentially lower return ← → Potentially higher return

1	2	3	4	5	6	7
---	---	---	---	---	---	---

- ▶ Historical data, such as data used to calculate the composite indicator, may not be a reliable indication of the future risk profile of the UCITS.
- ▶ The category of risk associated with this UCITS is not guaranteed and may change over time.
- ▶ The lowest category does not mean that the product is “risk-free”. The mutual fund is classified in category 3. This classification corresponds to a variable combination of exposure to equity and bond markets.

The Management Company does not exclusively or mechanically use ratings provided by credit rating agencies and favours its own credit risk analysis to assess the credit quality of the assets and in the selection of securities to purchase or sell.

- ▶ The mutual fund may also invest up to 20% of its assets in diversified and/or flexible UCI as part of “absolute return” strategies.
- ▶ The mutual fund may also use French or European index-based UCI or trackers (French or European UCITS funds or AIFs).
- ▶ Up to 75% of the mutual fund's assets may bear a currency risk.
- ▶ The mutual fund may borrow cash up to 10% for cash flow imbalance reasons.
- ▶ The mutual fund may invest in financial contracts, on regulated, organised, or OTC markets (swaps, futures, options or exchange forwards) for the purposes of hedging of and/or exposure to equity risk, interest rate risk, and/or currency risk.
- ▶ The distributable amounts of the IT unit are fully accumulated.
- ▶ Minimum recommended investment period: more than 3 years.
- ▶ Subscriptions and redemptions are pooled each day by 11:00 a.m. (Paris time) at the latest. They will be executed daily on the basis of the next net asset value calculated using the closing prices on the date of pooling of the requests. Settlements relating to subscription and redemption requests are carried out on the third business day following the centralisation date.

- ▶ The following risks, not taken into account in the indicator, may also have an impact on the net asset value of the UCITS:

Credit risk: risk that the financial situation of the issuer of a bond or a debt security will deteriorate, the extreme risk being the risk of default of the issuer.

Risk associated with financial contracts: the use of financial futures may lead to replicating, increasing, or reducing an exposure to markets, indices, assets, etc. The Fund's net asset value may thus, in some cases, change in a way different from that of the underlying markets to which the Fund is exposed.

Fees

"Fees and commissions charged are used to cover the operating costs of the UCITS, including the costs of marketing and distributing units. These fees reduce the potential growth of investments."

One-off fees deducted before or after investment	
Entry fees	None
Exit fees	None
The indicated percentage is the maximum that may be deducted from your capital before it is invested. Investors may obtain the actual amount of entry and exit fees from their adviser or distributor.	
Fees deducted by the UCITS over a year	
Ongoing fees	10.68%
Fees deducted by the UCITS under certain circumstances	
Performance commission	None

Ongoing fees are based on an estimate of the maximum that will be deducted. This percentage may vary from one year to the next.

For more information on fees, please refer to the "fees" section of the prospectus of this UCITS available at: <http://www.assetmanagement.hsbc.com/fr>

Ongoing fees do not include performance commissions and intermediation fees except in case of entry and/or exit fees paid by the UCITS when it buys or sells units of another collective management vehicle.

Past performance

Too little data is available to provide investors with useful indications on past performance.

- ▶ Past performance is not a reliable indicator of future performance. Past performance figures have been calculated in euros.
- ▶ The calculation of past performance takes account of all fees except any entry and exit fees.
- ▶ Performance figures are calculated with net coupons reinvested for the mutual fund and gross dividends reinvested for the index.
- ▶ The UCITS was created on 07 January 2009.
- ▶ The IT unit was created on 10 February 2017.

Helpful information

- ▶ Custodian: CACEIS Bank
- ▶ The UCITS's information documents (prospectus/annual report/half-yearly document) are available in French free of charge upon request sent to HSBC Global Asset Management's client services by email: hsbc.client.services-am@hsbc.fr
- ▶ The net asset value can be obtained from the Management Company.
- ▶ Taxation: Accumulation unit.
- ▶ The tax laws in the UCITS's country of residence could have an impact on investors.
- ▶ The information documents for other unit classes (prospectus / annual report / half-yearly document) are available in French free of charge upon request sent to the Management Company's client services by email: hsbc.client.services-am@hsbc.fr :
 - HSBC Select Moderate, A unit (ISIN code: FR0007036942)
 - HSBC Select Moderate, H unit (ISIN code: FR0011883305)
 - HSBC Select Moderate, R unit (ISIN code: FR0013269883)
 - HSBC Select Moderate, B unit (ISIN code: FR0013314002)
- ▶ HSBC Global Asset Management (France) can only be held responsible on the basis of statements contained in this document that are misleading, inaccurate, or inconsistent with the corresponding sections of the UCITS prospectus.
- ▶ This fund is not open to residents of the United States of America/"US Persons" (the definition can be found in the prospectus).
- ▶ Details of the management company's updated remuneration policy are available on its website at www.assetmanagement.hsbc.com/fr or, at no cost, by requesting a copy in writing from the management company. These details contain the method used to calculate the remuneration and benefits granted to certain employees, the bodies responsible for allocating remuneration, and the composition of the remuneration committee.

This UCITS is approved in France and regulated by the French financial markets authority (AMF).

HSBC Global Asset Management (France) is approved in France and regulated by the AMF.

The key investor information provided here is accurate and up to date as of 09 February 2018.